

PDE4D antibody

Cat. No. GTX14613

Host	Rabbit
Clonality	Polyclonal
Isotype	IgG
Applications	WB, ICC/IF, IHC-P, IHC-Fr, IP, ELISA
Reactivity	Human, Mouse, Rat

Package
100 µg

Applications

Application Note

*Optimal dilutions/concentrations should be determined by the researcher.

Suggested dilution	Recommended dilution
WB	1:500
ICC/IF	Assay dependent
IHC-P	Assay dependent
IHC-Fr	Assay dependent
IP	1:150
ELISA	1:10000

Not tested in other applications.

Calculated MW 91 kDa. ([Note](#))

Product Note

This antibody labels all PDE4D proteins including PDE4D1, PDE4D2, PDE4D3, PDE4D4, and PDE4D5 variants. Does not cross react with PDE4A, PDE4B, PDE4D6, PDE4D7, PDE4D8, PDE4D9, OR PDE4C.

Properties

Form	Liquid
Buffer	Tris/Glycine, 0.5% BSA, 30% Glycerol
Preservative	0.02% Sodium azide
Storage	Store as concentrated solution. Centrifuge briefly prior to opening vial. For short-term storage (1-2 weeks), store at 4°C. For long-term storage, aliquot and store at -20°C or below. Avoid multiple freeze-thaw cycles.
Concentration	0.57 mg/ml (Please refer to the vial label for the specific concentration.)
Immunogen	C-terminal cyclic peptide unique to all PDED subtypes variants.
Purification	Purified by affinity chromatography



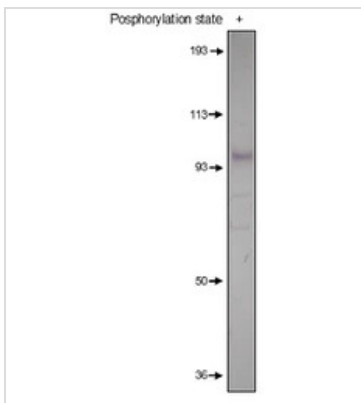
For full product information, images and publications, please visit our [website](#).

Conjugation Unconjugated

For laboratory research use only. Not for any clinical, therapeutic, or diagnostic use in humans or animals. Not for animal or human consumption.

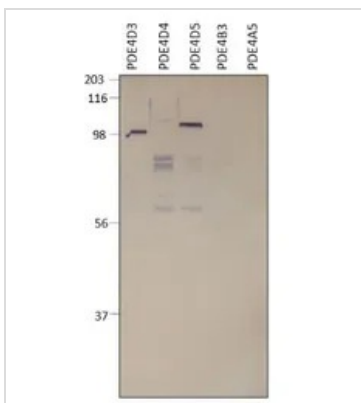
Note Purchasers shall not, and agree not to enable third parties to, analyze, copy, reverse engineer or otherwise attempt to determine the structure or sequence of the product.

DATA IMAGES



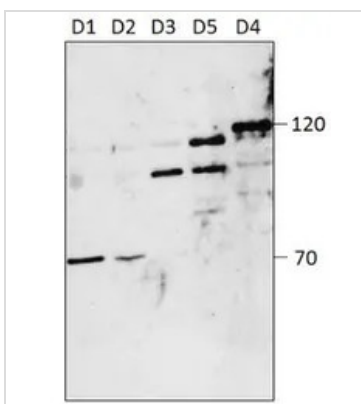
GTX14613 WB Image

WB analysis of phosphorylated PDE4D protein lysate using GTX14613 PDE4D antibody.
Dilution : 1:500



GTX14613 WB Image

WB analysis of PDE4D recombinant protein using GTX14613 PDE4D antibody.
Dilution : 1:500



GTX14613 WB Image

WB analysis of various PDE4D subtype specific positive control lysates using GTX14613 PDE4D antibody.
Dilution : 1:500



For full product information, images and publications, please visit our [website](#).