

PDE4D3 antibody

Cat. No. GTX14614

| | |
|--------------|----------------------------|
| Host | Rabbit |
| Clonality | Polyclonal |
| Isotype | IgG |
| Applications | WB, ICC/IF, IP, ELISA, IHC |
| Reactivity | Mouse, Rat, Chicken |

References (1)

Package

100 µg

Applications

Application Note

*Optimal dilutions/concentrations should be determined by the researcher.

| Suggested dilution | Recommended dilution |
|--------------------|----------------------|
| WB | 1:500 |
| ICC/IF | 1:200 |
| IP | 1:150 |
| ELISA | 1:10000 |
| IHC | 1:200 |

Not tested in other applications.

Calculated MW 91 kDa. ([Note](#))

Product Note This antibody does not cross react with PDE4D1, PDE4D2, PDE4D4, PDE4D5. Does not cross react with other PDE family members such as PDE4A, PDE4B or PDE4C.

Properties

| | |
|---------------|--|
| Form | Liquid |
| Buffer | Tris/Glycine, 0.5% BSA, 30% Glycerol |
| Preservative | 0.02% Sodium azide |
| Storage | Store as concentrated solution. Centrifuge briefly prior to opening vial. For short-term storage (1-2 weeks), store at 4°C. For long-term storage, aliquot and store at -20°C or below. Avoid multiple freeze-thaw cycles. |
| Concentration | 0.68 mg/ml (Please refer to the vial label for the specific concentration.) |
| Immunogen | Synthetic peptide corresponding to unique amino acid sequence on PDE4D3 variant. |
| Purification | Purified by affinity chromatography |
| Conjugation | Unconjugated |



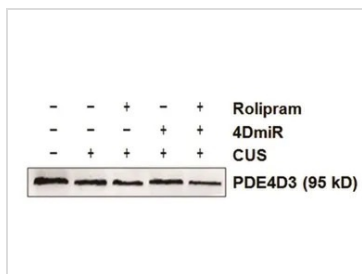
For full product information, images and publications, please visit our [website](#).

Date 2026 / 01 / 08 Page 1 of 2

For laboratory research use only. Not for any clinical, therapeutic, or diagnostic use in humans or animals. Not for animal or human consumption.

Note

Purchasers shall not, and agree not to enable third parties to, analyze, copy, reverse engineer or otherwise attempt to determine the structure or sequence of the product.

DATA IMAGES

GTX14614 WB Image

WB analysis of mouse prefrontal cortical tissue lysate using GTX14614 PDE4D3 antibody.


GTX14614 WB Image

WB analysis of PDE4D3 recombinant protein using GTX14614 PDE4D3 antibody.

Dilution : 1:500



For full product information, images and publications, please visit our [website](https://www.genetex.com).