

PDE7B antibody

Cat. No. GTX14617

| | |
|---------------------|----------------------------|
| Host | Rabbit |
| Clonality | Polyclonal |
| Isotype | IgG |
| Applications | WB, ICC/IF, IP, ELISA, IHC |
| Reactivity | Human |

References (1)

Package

100 µg

Applications

Application Note

*Optimal dilutions/concentrations should be determined by the researcher.

| Suggested dilution | Recommended dilution |
|--------------------|----------------------|
| WB | 1:500-1:1000 |
| ICC/IF | 1:200 |
| IP | 1:250 |
| ELISA | 1:10000 |
| IHC | 1:200 |

Not tested in other applications.

Calculated MW 52 kDa. ([Note](#))

Properties

| | |
|----------------------|--|
| Form | Liquid |
| Buffer | Tris/Glycine, 0.5% BSA, 30% Glycerol |
| Preservative | 0.02% Sodium azide |
| Storage | Store as concentrated solution. Centrifuge briefly prior to opening vial. For short-term storage (1-2 weeks), store at 4°C. For long-term storage, aliquot and store at -20°C or below. Avoid multiple freeze-thaw cycles. |
| Concentration | 0.5 mg/ml (Please refer to the vial label for the specific concentration.) |
| Immunogen | Synthetic cyclic peptide common to all PDE7B variants. |
| Purification | Purified by affinity chromatography |
| Conjugation | Unconjugated |



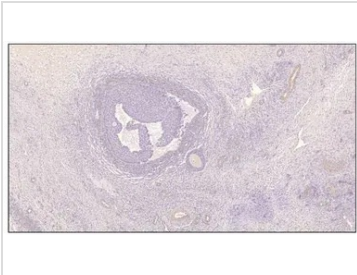
For full product information, images and publications, please visit our [website](#).

For laboratory research use only. Not for any clinical, therapeutic, or diagnostic use in humans or animals. Not for animal or human consumption.

Note

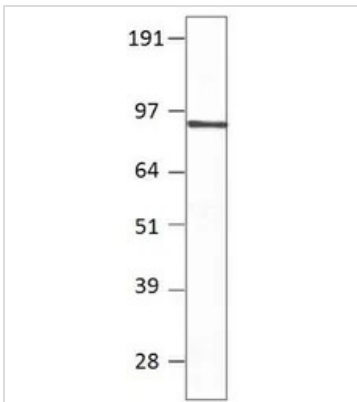
Purchasers shall not, and agree not to enable third parties to, analyze, copy, reverse engineer or otherwise attempt to determine the structure or sequence of the product.

DATA IMAGES

**GTX14617 IHC Image**

IHC analysis of human ovarian medulla tissue using GTX14617 PDE7B antibody.

Dilution : 1:150

**GTX14617 WB Image**

WB analysis of PDE7B recombinant protein using GTX14617 PDE7B antibody.

Dilution : 1:1000



For full product information, images and publications, please visit our [website](#).