

## PDE10A antibody

Cat. No. GTX14622

Host	Rabbit
Clonality	Polyclonal
Isotype	IgG
Applications	WB, ICC/IF, IHC-P, IP, ELISA, IHC
Reactivity	Human, Mouse, Rat, Monkey

Package  
100 µg

## Applications

## Application Note

\*Optimal dilutions/concentrations should be determined by the researcher.

Suggested dilution	Recommended dilution
WB	1:200
ICC/IF	1:10000
IHC-P	Assay dependent
IP	1:100-1:150
ELISA	1:10000
IHC	1:100-1:150

Not tested in other applications.

Calculated MW 88 kDa. ( [Note](#) )**Product Note** This antibody has no cross-reactivity against any other PDE family members tested so far. This antibody will detect all PDE10A variants and subtypes.

## Properties

Form	Liquid
Buffer	Tris/Glycine, 0.5% BSA, 30% Glycerol
Preservative	0.02% Sodium azide
Storage	Store as concentrated solution. Centrifuge briefly prior to opening vial. For short-term storage (1-2 weeks), store at 4°C. For long-term storage, aliquot and store at -20°C or below. Avoid multiple freeze-thaw cycles.
Concentration	0.7 mg/ml (Please refer to the vial label for the specific concentration.)
Immunogen	Synthetic peptide (Human) taken against a common sequence near the 250-325 amino acids downstream of N-terminal region of PDE10A. Synthetic MAP.
Purification	Purified by affinity chromatography

For full product information, images and publications, please visit our [website](#).

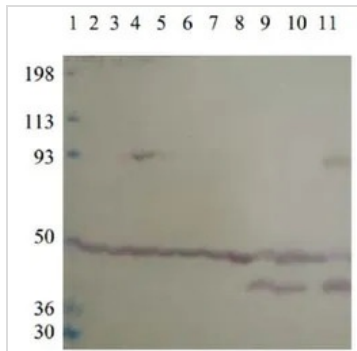
**Conjugation**

Unconjugated

**Note**

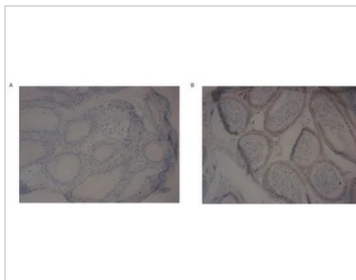
For laboratory research use only. Not for any clinical, therapeutic, or diagnostic use in humans or animals. Not for animal or human consumption.

Purchasers shall not, and agree not to enable third parties to, analyze, copy, reverse engineer or otherwise attempt to determine the structure or sequence of the product.

**DATA IMAGES**

**GTX14622 WB Image**

WB analysis of rat Frontal cortex, Parietalcortex, Striatum, Amygdala, Hypothalamus, Hippocampus, Olfactory bulb, Brain stem, Cerebellum, Spinal cord and whole brain lysates using GTX14622 PDE10A antibody.

Dilution : 1:500

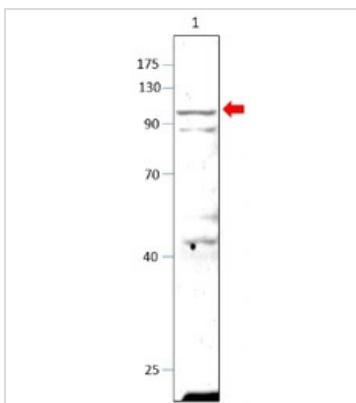

**GTX14622 IHC Image**

IHC analysis of rat testis tissue using GTX14622 PDE10A antibody.

Figure A : Negative control

Figure B : Primary antibody

Dilution : 1:200


**GTX14622 WB Image**

WB analysis of rat striatum tissue lysates using GTX14622 PDE10A antibody.

Dilution : 1:500


 For full product information, images and publications, please visit our [website](https://www.genetex.com).