

PDE11A antibody

Cat. No. GTX14624

| | |
|---------------------|----------------------------|
| Host | Rabbit |
| Clonality | Polyclonal |
| Isotype | IgG |
| Applications | WB, ICC/IF, IP, ELISA, IHC |
| Reactivity | Human, Mouse, Rat |

References (1)

Package

100 µg

Applications

Application Note

*Optimal dilutions/concentrations should be determined by the researcher.

| Suggested dilution | Recommended dilution |
|--------------------|----------------------|
| WB | 1:500 |
| ICC/IF | 1:250 |
| IP | 1:250 |
| ELISA | 1:10000 |
| IHC | 1:250 |

Not tested in other applications.

Calculated MW 105 kDa. ([Note](#))

Product Note This antibody does not cross-react with any of the members of the PDE family. This antibody is common to all PDE11A variants including PDE11A1-PDE11A4.

Properties

| | |
|----------------------|--|
| Form | Liquid |
| Buffer | Tris/Glycine, 0.5% BSA, 30% Glycerol |
| Preservative | 0.02% Sodium azide |
| Storage | Store as concentrated solution. Centrifuge briefly prior to opening vial. For short-term storage (1-2 weeks), store at 4°C. For long-term storage, aliquot and store at -20°C or below. Avoid multiple freeze-thaw cycles. |
| Concentration | 0.68 mg/ml (Please refer to the vial label for the specific concentration.) |
| Immunogen | Synthetic peptide conjugated to KLH, corresponding to C terminal amino acids 454-468 of human PDE11A. |
| Purification | Purified by affinity chromatography |
| Conjugation | Unconjugated |

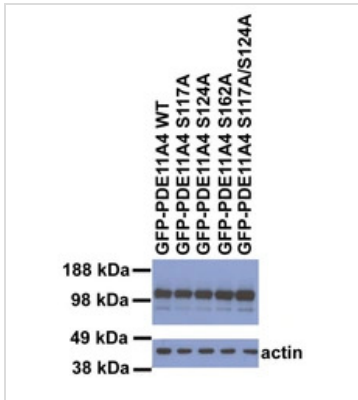


For full product information, images and publications, please visit our [website](#).

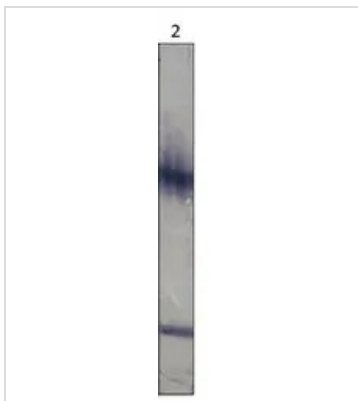
For laboratory research use only. Not for any clinical, therapeutic, or diagnostic use in humans or animals. Not for animal or human consumption.

Note

Purchasers shall not, and agree not to enable third parties to, analyze, copy, reverse engineer or otherwise attempt to determine the structure or sequence of the product.

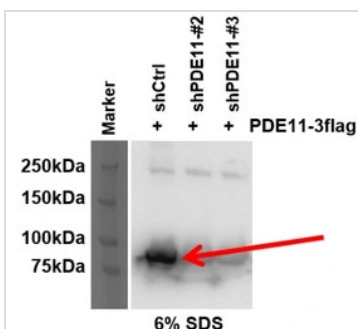
DATA IMAGES

GTX14624 WB Image

WB analysis of PDE11A recombinant protein using GTX14624 PDE11A antibody.


GTX14624 WB Image

WB analysis of PDE11A recombinant protein using GTX14624 PDE11A antibody.

Dilution : 1:250


GTX14624 WB Image

WB analysis of PDE11A overexpressed 293T cells with or without shRNA using GTX14624 PDE11A antibody.

Dilution : 1:500



For full product information, images and publications, please visit our [website](https://www.genetex.com).