

PDE9A antibody

Cat. No. GTX14625

Host	Rabbit
Clonality	Polyclonal
Isotype	IgG
Applications	WB, ICC/IF, IP, ELISA, IHC
Reactivity	Human, Mouse, Rat

References (3)

Package

100 µg

Applications

Application Note

*Optimal dilutions/concentrations should be determined by the researcher.

Suggested dilution	Recommended dilution
WB	1:500
ICC/IF	1:100
IP	1:250
ELISA	1:100
IHC	1:100

Not tested in other applications.

Calculated MW 68 kDa. ([Note](#))**Product Note** This antibody does not cross-react with PDE9B protein or any other PDE family members.

Properties

Form	Liquid
Buffer	Tris/Glycine, 0.5% BSA, 30% Glycerol
Preservative	0.02% Sodium azide
Storage	Store as concentrated solution. Centrifuge briefly prior to opening vial. For short-term storage (1-2 weeks), store at 4°C. For long-term storage, aliquot and store at -20°C or below. Avoid multiple freeze-thaw cycles.
Concentration	0.55 mg/ml (Please refer to the vial label for the specific concentration.)
Immunogen	Synthetic cyclic peptide common to all PDE9A variants.
Purification	Purified by affinity chromatography
Conjugation	Unconjugated

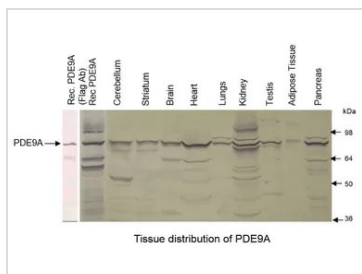


For full product information, images and publications, please visit our [website](#).

For laboratory research use only. Not for any clinical, therapeutic, or diagnostic use in humans or animals. Not for animal or human consumption.

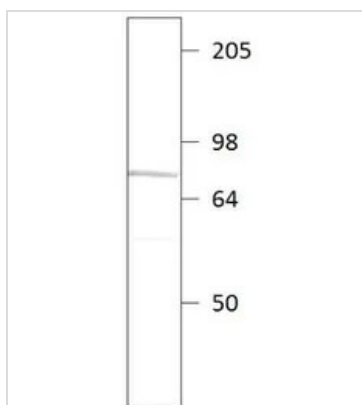
Note

Purchasers shall not, and agree not to enable third parties to, analyze, copy, reverse engineer or otherwise attempt to determine the structure or sequence of the product.

DATA IMAGES

GTX14625 WB Image

WB analysis of PDE9A recombinant protein using GTX14625 PDE9A antibody.

Dilution : 1:1000


GTX14625 WB Image

WB analysis of PDE9A recombinant protein using GTX14625 PDE9A antibody.

Dilution : 1:500



For full product information, images and publications, please visit our [website](https://www.genetex.com).