

PDE4D5 antibody

Cat. No. GTX14626

Host	Rabbit
Clonality	Polyclonal
Isotype	IgG
Applications	WB, ICC/IF, IP, ELISA, IHC
Reactivity	Human, Mouse, Rat, Rabbit

References (1)

Package

100 µg

Applications

Application Note

*Optimal dilutions/concentrations should be determined by the researcher.

Suggested dilution	Recommended dilution
WB	1:500
ICC/IF	1:200
IP	1:150
ELISA	1:10000
IHC	1:200

Not tested in other applications.

Calculated MW 91 kDa. ([Note](#))**Product Note**

This antibody does not cross-react with other members of the PDE4D family or with other PDE4 proteins (PDE4A, PDE4B and PDE4C) or with other PDE family members.
KO/KD validation is based on published data (PMID: 22583680).

Properties

Form	Liquid
Buffer	Tris/Glycine, 0.5% BSA, 30% Glycerol
Preservative	0.02% Sodium azide
Storage	Store as concentrated solution. Centrifuge briefly prior to opening vial. For short-term storage (1-2 weeks), store at 4°C. For long-term storage, aliquot and store at -20°C or below. Avoid multiple freeze-thaw cycles.
Concentration	0.65 mg/ml (Please refer to the vial label for the specific concentration.)
Immunogen	A 20 amino acid synthetic peptide taken from the N-terminus corresponding to the PDE4D5 variant.
Purification	Purified by affinity chromatography
Conjugation	Unconjugated



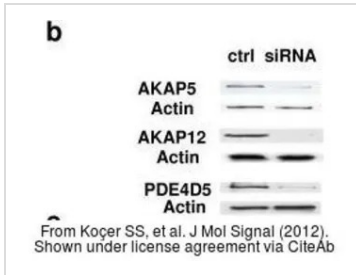
For full product information, images and publications, please visit our [website](#).

For laboratory research use only. Not for any clinical, therapeutic, or diagnostic use in humans or animals. Not for animal or human consumption.

Note

Purchasers shall not, and agree not to enable third parties to, analyze, copy, reverse engineer or otherwise attempt to determine the structure or sequence of the product.

DATA IMAGES

**GTX14626 WB Image**

The data was published in the journal J Mol Signal in 2012. [PMID: 22583680](https://pubmed.ncbi.nlm.nih.gov/22583680/)



For full product information, images and publications, please visit our [website](#).