

## IFNAR1 antibody [MAR1-5A3]

**Cat. No. GTX14637**

<b>Host</b>	Mouse
<b>Clonality</b>	Monoclonal
<b>Isotype</b>	IgG1
<b>Applications</b>	WB, Neutralizing /Inhibition
<b>Reactivity</b>	Mouse

References ( 2 )

Package

250 µg

## Applications

**Application Note**

\*Optimal dilutions/concentrations should be determined by the researcher.

Suggested dilution	Recommended dilution
WB	Assay dependent
Neutralizing /Inhibition	Assay dependent

Not tested in other applications.

**Calculated MW** 66 kDa. ( [Note](#) )

## Properties

<b>Form</b>	Liquid
<b>Buffer</b>	Filter-sterilized PBS
<b>Preservative</b>	No preservatives
<b>Storage</b>	Store as concentrated solution. Centrifuge briefly prior to opening vial. Store at 4°C. DO NOT FREEZE.
<b>Concentration</b>	Batch dependent (Please refer to the vial label for the specific concentration.)
<b>Immunogen</b>	Extracellular domain of mouse IFNAR-1
<b>Purification</b>	Protein G purified From tissue culture supernatant
<b>Purity</b>	>95% (Determined by SDS-PAGE)
<b>Endotoxin</b>	< 0.002 EU/µg (Determined by LAL assay)
<b>Conjugation</b>	Unconjugated



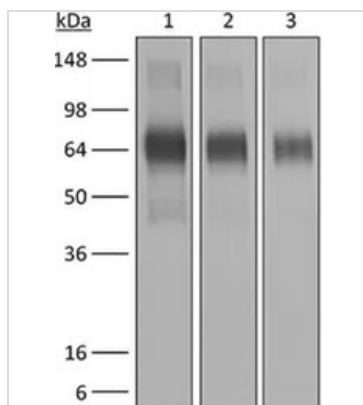
For full product information, images and publications, please visit our [website](#).

For laboratory research use only. Not for any clinical, therapeutic, or diagnostic use in humans or animals. Not for animal or human consumption.

**Note**

Purchasers shall not, and agree not to enable third parties to, analyze, copy, reverse engineer or otherwise attempt to determine the structure or sequence of the product.

## DATA IMAGES

**GTX14637 WB Image**

WB analysis of purified IFNAR1 recombinant protein using GTX14637 IFNAR1 antibody [MAR1-5A3].

Lane 1 : 0.5 ug reduced purified mouse IFNAR-1 with histidine tag at C-terminus

Lane 2 : 0.25 ug reduced purified mouse IFNAR-1 with histidine tag at C-terminus

Lane 3 : 0.125 ug reduced purified mouse IFNAR-1 with histidine tag at C-terminus.

Dilution : 8 ug/ml



For full product information, images and publications, please visit our [website](#).