

PDE5A antibody

Cat. No. GTX14672

Host	Rabbit
Clonality	Polyclonal
Isotype	IgG
Applications	WB, ICC/IF, IHC-P, IHC-Fr, IP, ELISA
Reactivity	Human, Mouse, Rat, Pig

References (1)

Package

100 µg

Applications

Application Note

*Optimal dilutions/concentrations should be determined by the researcher.

Suggested dilution	Recommended dilution
WB	1:500-1:1000
ICC/IF	1:250
IHC-P	Assay dependent
IHC-Fr	Assay dependent
IP	1:250
ELISA	1:10000

Not tested in other applications.

Calculated MW 100 kDa. ([Note](#))**Product Note** This antibody detects 99 and 89 kDa PDE5A proteins in various tissues. This antibody does not cross-react with other PDE family members.

Properties

Form	Liquid
Buffer	Tris/Glycine, 0.5% BSA, 30% Glycerol
Preservative	0.02% Sodium azide
Storage	Store as concentrated solution. Centrifuge briefly prior to opening vial. For short-term storage (1-2 weeks), store at 4°C. For long-term storage, aliquot and store at -20°C or below. Avoid multiple freeze-thaw cycles.
Concentration	0.55-0.60 mg/ml (Please refer to the vial label for the specific concentration.)
Immunogen	Synthetic peptide common to all PDE5A variants taken within amino acid region 120-170 on human PDE5A protein.
Purification	Purified by affinity chromatography



For full product information, images and publications, please visit our [website](#).

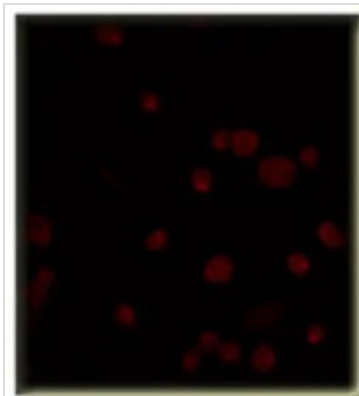
Conjugation

Unconjugated

Note

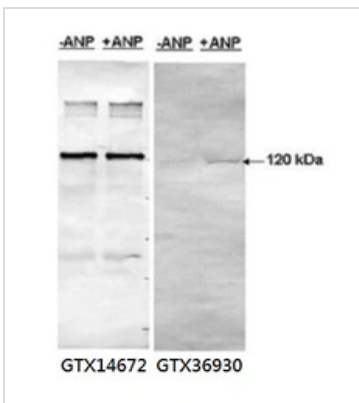
For laboratory research use only. Not for any clinical, therapeutic, or diagnostic use in humans or animals. Not for animal or human consumption.

Purchasers shall not, and agree not to enable third parties to, analyze, copy, reverse engineer or otherwise attempt to determine the structure or sequence of the product.

DATA IMAGES

GTX14672 ICC/IF Image

ICC/IF analysis of cells expressing PDE5 using GTX14672 PDE5A antibody.

Dilution : 1:200


GTX14672 WB Image

WB analysis of recombinant GFP-PDESA1 over-expressed cells treated with or without Atrial natriuretic peptide (ANP) using GTX14672 PDE5A antibody or GTX36930 PDE5A (phospho Ser 92) antibody.

Dilution : 1:500



For full product information, images and publications, please visit our [website](https://www.genetex.com).