

Punt antibody

Cat. No. GTX14680

Host	Rabbit
Clonality	Polyclonal
Isotype	IgG
Applications	WB, ICC/IF, IP, ELISA, IHC
Reactivity	Drosophila

Package
100 µg

Applications

Application Note

*Optimal dilutions/concentrations should be determined by the researcher.

Suggested dilution	Recommended dilution
WB	1:500
ICC/IF	Assay dependent
IP	1:200
ELISA	1:10000
IHC	1:100

Not tested in other applications.

Properties

Form	Liquid
Buffer	Tris/Glycine, 0.5% BSA, 30% Glycerol
Preservative	0.02% Sodium azide
Storage	Store as concentrated solution. Centrifuge briefly prior to opening vial. For short-term storage (1-2 weeks), store at 4°C. For long-term storage, aliquot and store at -20°C or below. Avoid multiple freeze-thaw cycles.
Concentration	0.75 mg/ml (Please refer to the vial label for the specific concentration.)
Immunogen	Synthetic peptide corresponding to C terminal amino acids 497-515 of Drosophila melanogaster PUNT protein. Peptides were amidated for conjugation. Sequence:QLLIK NHTNIDDAKESTNC
Purification	Purified by affinity chromatography
Conjugation	Unconjugated

Note

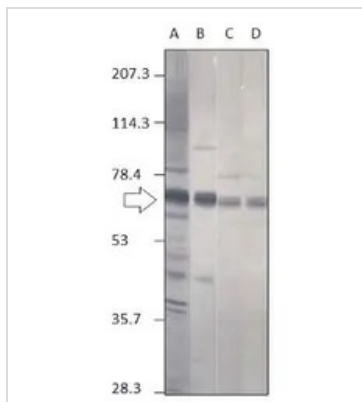
For laboratory research use only. Not for any clinical, therapeutic, or diagnostic use in humans or animals. Not for animal or human consumption.

Purchasers shall not, and agree not to enable third parties to, analyze, copy, reverse engineer or otherwise attempt to determine the structure or sequence of the product.



For full product information, images and publications, please visit our [website](#).

DATA IMAGES



GTX14680 WB Image

WB analysis of PUNT-Flag recombinant protein using GTX47861 Punt antibody(Lane A) or GTX14680 Punt antibody(Lane B and D)

Dilution : 1:500



For full product information, images and publications, please visit our [website](https://www.genetex.com).