

S100 beta antibody

Cat. No. GTX14688

Host	Rabbit
Clonality	Polyclonal
Isotype	IgG
Applications	WB, ICC/IF, IHC-P, IP, ELISA, IHC
Reactivity	Human, Mouse, Rat, Baboon

References (3)

Package

100 µg

Applications

Application Note

*Optimal dilutions/concentrations should be determined by the researcher.

Suggested dilution	Recommended dilution
WB	1:500
ICC/IF	Assay dependent
IHC-P	Assay dependent
IP	Assay dependent
ELISA	1:10000
IHC	Assay dependent

Not tested in other applications.

Calculated MW 11 kDa. ([Note](#))

Properties

Form	Liquid
Buffer	Tris/Glycine, 0.5% BSA, 30% Glycerol
Preservative	0.02% Sodium azide
Storage	Store as concentrated solution. Centrifuge briefly prior to opening vial. For short-term storage (1-2 weeks), store at 4°C. For long-term storage, aliquot and store at -20°C or below. Avoid multiple freeze-thaw cycles.
Concentration	0.65 mg/ml (Please refer to the vial label for the specific concentration.)
Immunogen	Full length protein of human S100 beta/beta homodimer.
Purification	Purified by affinity chromatography
Conjugation	Unconjugated

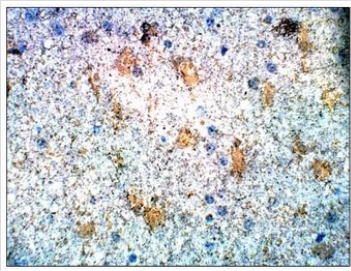


For full product information, images and publications, please visit our [website](#).

For laboratory research use only. Not for any clinical, therapeutic, or diagnostic use in humans or animals. Not for animal or human consumption.

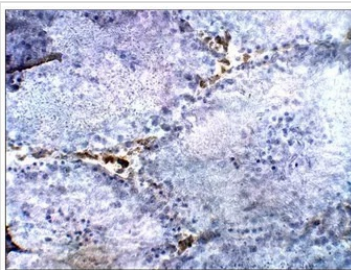
Note

Purchasers shall not, and agree not to enable third parties to, analyze, copy, reverse engineer or otherwise attempt to determine the structure or sequence of the product.

DATA IMAGES

GTX14688 IHC-P Image

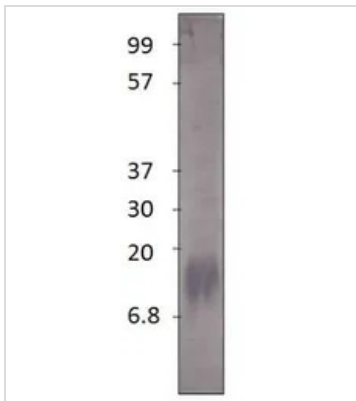
IHC-P analysis of baboon brain tissue using GTX14688 S100 beta antibody.

Dilution : 1:50


GTX14688 IHC-P Image

IHC-P analysis of rat testis tissue using GTX14688 S100 beta antibody.

Dilution : 1:50


GTX14688 WB Image

WB analysis of S100 beta recombinant protein using GTX14688 S100 beta antibody.

Dilution : 1:500



For full product information, images and publications, please visit our [website](https://www.genetex.com).