

MUC1 antibody

Cat. No. GTX14690

Host	Rabbit
Clonality	Polyclonal
Isotype	IgG
Applications	IHC-P, IP, ELISA
Reactivity	Human, Monkey, Baboon

Package
100 µg

Applications

Application Note

*Optimal dilutions/concentrations should be determined by the researcher.

Suggested dilution	Recommended dilution
IHC-P	Assay dependent
IP	1:200
ELISA	1:10000

Not tested in other applications.

Product Note The antibody will detect deglycosylated MUCIN1 protein.

Properties

Form	Liquid
Buffer	Tris/Glycine, 0.5% BSA, 30% Glycerol
Preservative	0.02% Sodium azide
Storage	Store as concentrated solution. Centrifuge briefly prior to opening vial. For short-term storage (1-2 weeks), store at 4°C. For long-term storage, aliquot and store at -20°C or below. Avoid multiple freeze-thaw cycles.
Concentration	0.65 mg/ml (Please refer to the vial label for the specific concentration.)
Immunogen	Synthetic peptide corresponding to unique amino acid sequence on MUCIN1 protein.
Purification	Purified by affinity chromatography
Conjugation	Unconjugated

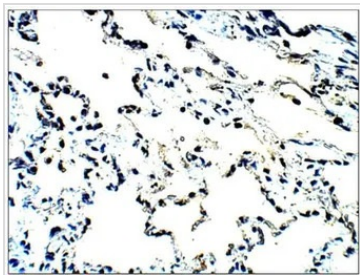
Note

For laboratory research use only. Not for any clinical, therapeutic, or diagnostic use in humans or animals. Not for animal or human consumption.

Purchasers shall not, and agree not to enable third parties to, analyze, copy, reverse engineer or otherwise attempt to determine the structure or sequence of the product.

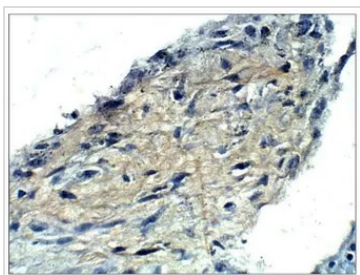


For full product information, images and publications, please visit our [website](#).

DATA IMAGES

GTx14690 IHC-P Image

IHC-P analysis of baboon lung tissue using GTx14690 MUC1 antibody.

Dilution : 1:100


GTx14690 IHC-P Image

IHC-P analysis of baboon lung tissue using GTx14690 MUC1 antibody.

Dilution : 1:100



For full product information, images and publications, please visit our [website](https://www.genetex.com).