

# Synaptophysin antibody

**Cat. No. GTX14692**

|                    |                                    |
|--------------------|------------------------------------|
| <b>Host</b>        | Rabbit                             |
| <b>Clonality</b>   | Polyclonal                         |
| <b>Isotype</b>     | IgG                                |
| <b>Application</b> | WB, ICC/IF, IHC-P, IP, ELISA       |
| <b>Reactivity</b>  | Human, Mouse, Rat, Chicken, Monkey |

**Package**  
100 µg

## APPLICATION

### Application Note

\*Optimal dilutions/concentrations should be determined by the researcher.

| Suggested dilution | Recommended dilution |
|--------------------|----------------------|
| WB                 | 1:1000               |
| ICC/IF             | 1:100                |
| IHC-P              | Assay dependent      |
| IP                 | 1:125                |
| ELISA              | 1:10000              |

Not tested in other applications.

**Calculated MW** 34 kDa. ( [Note](#) )

**Product Note** The antibody does not cross-react other synaptic vesicle proteins such as synaptotagmin, GAP45, and SNAP25 proteins.

## PROPERTIES

|                      |  |
|----------------------|--|
| <b>Form</b>          | Liquid   |
| <b>Buffer</b>        | Tris/Glycine, 0.5% BSA, 30% Glycerol   |
| <b>Preservative</b>  | 0.02% Sodium azide   |
| <b>Storage</b>       | Store as concentrated solution. Centrifuge briefly prior to opening vial. For short-term storage (1-2 weeks), store at 4°C. For long-term storage, aliquot and store at -20°C or below. Avoid multiple freeze-thaw cycles. |
| <b>Concentration</b> | 0.60-0.62 mg/ml (Please refer to the vial label for the specific concentration.)   |
| <b>Immunogen</b>     | Synthetic peptide taken within amino acid region 1-100 on human Synaptophysin protein.   |
| <b>Purification</b>  | Purified by affinity chromatography  |
| <b>Conjugation</b>   | Unconjugated   |

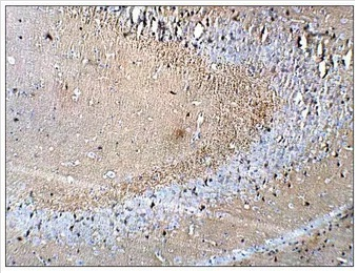


For full product information, images and publications, please visit our [website](#).

For laboratory research use only. Not for any clinical, therapeutic, or diagnostic use in humans or animals. Not for animal or human consumption.

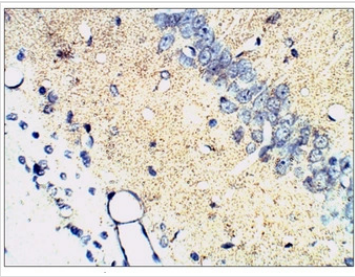
**Note**

Purchasers shall not, and agree not to enable third parties to, analyze, copy, reverse engineer or otherwise attempt to determine the structure or sequence of the product.

**DATA IMAGES**

**GTX14692 IHC-P Image**

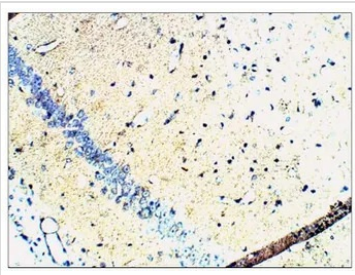
IHC-P analysis of mouse brain tissue using GTX14692 Synaptophysin antibody.

Dilution : 1:100


**GTX14692 IHC-P Image**

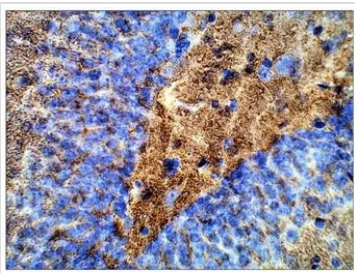
IHC-P analysis of rat brain tissue using GTX14692 Synaptophysin antibody.

Dilution : 1:100


**GTX14692 IHC-P Image**

IHC-P analysis of rat brain tissue using GTX14692 Synaptophysin antibody.

Dilution : 1:100


**GTX14692 IHC-P Image**

IHC-P analysis of rat brain tissue using GTX14692 Synaptophysin antibody.

Dilution : 1:100



For full product information, images and publications, please visit our [website](https://www.genetex.com).