

## c-Met antibody [3i20(25H2)]

Cat. No. GTX14700

Host	Mouse
Clonality	Monoclonal
Isotype	IgG1
Application	WB, IP, IHC (Free Floating)
Reactivity	Human, Mouse, Rat, Monkey, Macaque

Reference ( 1 )

Package

50 µl

## APPLICATION

## Application Note

\*Optimal dilutions/concentrations should be determined by the researcher.

Suggested dilution	Recommended dilution
WB	1:1000
IP	1:50
IHC (Free Floating)	Assay dependent

Not tested in other applications.

**Calculated MW** 156 kDa. ( [Note](#) )

**Product Note** Recognizes endogenous levels of human Met at ~145kD and at 170kD for pro-Met.

## PROPERTIES

Form	Liquid
Buffer	10mM Sodium HEPES, 150mM NaCl, 0.01% BSA, 50% Glycerol
Preservative	0.02% Sodium azide
Storage	Store as concentrated solution. Centrifuge briefly prior to opening vial. For short-term storage (1-2 weeks), store at 4°C. For long-term storage, aliquot and store at -20°C or below. Avoid multiple freeze-thaw cycles.
Immunogen	Synthetic peptide corresponding to residues surrounding Tyr1234 of human Met.
Purification	Unpurified
Conjugation	Unconjugated

## Note

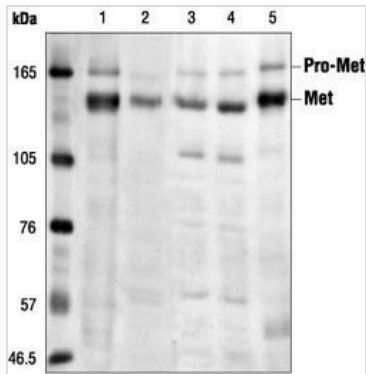
For laboratory research use only. Not for any clinical, therapeutic, or diagnostic use in humans or animals. Not for animal or human consumption.

Purchasers shall not, and agree not to enable third parties to, analyze, copy, reverse engineer or otherwise attempt to determine the structure or sequence of the product.



For full product information, images and publications, please visit our [website](#).

## DATA IMAGES



### GTx14700 WB Image

WB analysis of various samples using GTx14700 c-Met antibody [3i20(25H2)].

Lane 1 : mIMCD3

Lane 2 : Vero

Lane 3 : 293 (HGF stimulated)

Lane 4 : 293 (starved)

Lane 5 : C6



For full product information, images and publications, please visit our [website](https://www.genetex.com).