

## p70 S6K antibody, C-term

Cat. No. GTX14708

|              |                   |
|--------------|-------------------|
| Host         | Goat              |
| Clonality    | Polyclonal        |
| Isotype      | IgG               |
| Applications | WB, IHC-P         |
| Reactivity   | Human, Mouse, Rat |

Package  
100 µg

## Applications

## Application Note

\*Optimal dilutions/concentrations should be determined by the researcher.

| Suggested dilution | Recommended dilution |
|--------------------|----------------------|
| WB                 | 0.05-0.1 µg/ml       |
| IHC-P              | 2-4 µg/ml            |

**Note : Human Kidney shows staining in the cytoplasm-rich PCT while less so in the DCT and no signals in the glomerulus.**

Not tested in other applications.

Calculated MW 59 kDa. ( [Note](#) )

## Properties

|               |  |
|---------------|--|
| Form          | Liquid   |
| Buffer        | TBS, 0.5% BSA  |
| Preservative  | 0.02% Sodium azide   |
| Storage       | Store as concentrated solution. Centrifuge briefly prior to opening vial. For short-term storage (1-2 weeks), store at 4°C. For long-term storage, aliquot and store at -20°C or below. Avoid multiple freeze-thaw cycles. |
| Concentration | 0.50 mg/ml (Please refer to the vial label for the specific concentration.)  |
| Immunogen     | Peptide with sequence C-MISKRPEHLRMNL, from the C Terminus of the protein sequence according to NP_003152.1.   |
| Purification  | Purified by ammonium sulphate precipitation followed by antigen affinity chromatography  |
| Conjugation   | Unconjugated   |

## Note

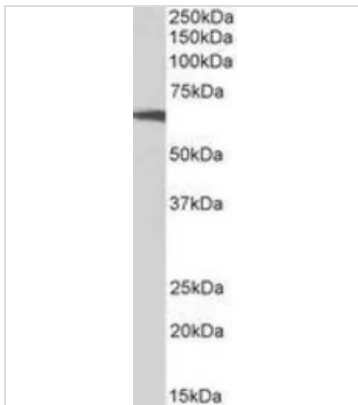
For laboratory research use only. Not for any clinical, therapeutic, or diagnostic use in humans or animals. Not for animal or human consumption.

Purchasers shall not, and agree not to enable third parties to, analyze, copy, reverse engineer or otherwise attempt to determine the structure or sequence of the product.



For full product information, images and publications, please visit our [website](#).

## DATA IMAGES

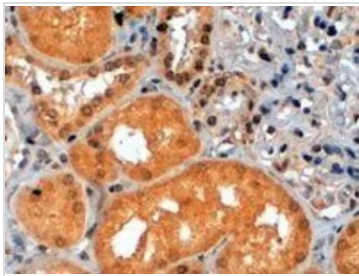


### GTX14708 WB Image

WB analysis of NIH-3T3 cell lysate using GTX14708 p70 S6K antibody, C-term.

Dilution : 0.1µg/ml

Loading : 35µg protein in RIPA buffer

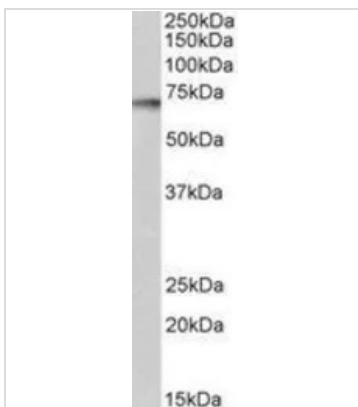


### GTX14708 IHC-P Image

IHC-P analysis of human kidney using GTX14708 p70 S6K antibody, C-term.

Antigen retrieval : citrate buffer pH 6

Dilution : 2µg/ml

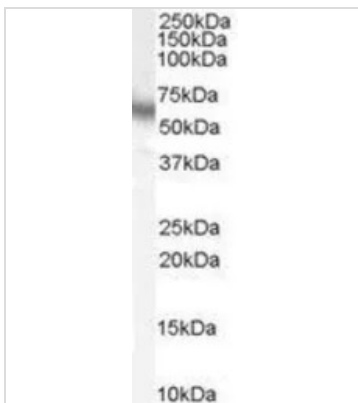


### GTX14708 WB Image

WB analysis of rat brain lysate using GTX14708 p70 S6K antibody, C-term.

Dilution : 1µg/ml

Loading : 35µg protein in RIPA buffer



### GTX14708 WB Image

WB analysis of human placenta lysate using GTX14708 p70 S6K antibody, C-term.

Dilution : 0.05µg/ml

Loading : 35µg protein in RIPA buffer



For full product information, images and publications, please visit our [website](https://www.genetex.com).