

ACK1 antibody

Cat. No. GTX14776

| | |
|--------------|-------------------|
| Host | Rabbit |
| Clonality | Polyclonal |
| Isotype | IgG |
| Applications | WB, IP, ELISA |
| Reactivity | Human, Mouse, Rat |

Package
100 µg

Applications

Application Note

*Optimal dilutions/concentrations should be determined by the researcher.

| Suggested dilution | Recommended dilution |
|--------------------|----------------------|
| WB | 1:500 |
| IP | 1:200 |
| ELISA | 1:10000 |

Not tested in other applications.

Calculated MW 115 kDa. ([Note](#))

Properties

| | |
|---------------|--|
| Form | Liquid |
| Buffer | Tris/Glycine, 0.5% BSA, 30% Glycerol |
| Preservative | 0.02% Sodium azide |
| Storage | Store as concentrated solution. Centrifuge briefly prior to opening vial. For short-term storage (1-2 weeks), store at 4°C. For long-term storage, aliquot and store at -20°C or below. Avoid multiple freeze-thaw cycles. |
| Concentration | 0.59-0.68 mg/ml (Please refer to the vial label for the specific concentration.) |
| Immunogen | Synthetic peptide taken within amino acid region 300-400 on ACK1 protein. |
| Purification | Purified by affinity chromatography |
| Conjugation | Unconjugated |

Note

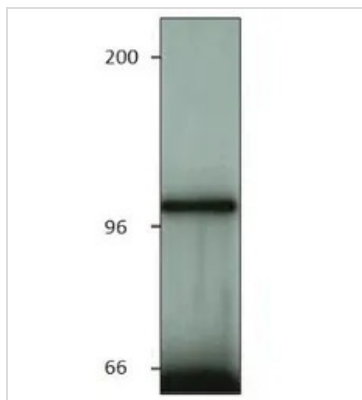
For laboratory research use only. Not for any clinical, therapeutic, or diagnostic use in humans or animals. Not for animal or human consumption.

Purchasers shall not, and agree not to enable third parties to, analyze, copy, reverse engineer or otherwise attempt to determine the structure or sequence of the product.



For full product information, images and publications, please visit our [website](#).

DATA IMAGES



GTX14776 IP Image

IP analysis of solubilized COS1 cells expressing constitutively active ACK1 (250μl) using GTX14776 ACK1 antibody.



For full product information, images and publications, please visit our [website](#).