

GUCY2F antibody

Cat. No. GTX14789

Host	Rabbit
Clonality	Polyclonal
Isotype	IgG
Applications	WB, ICC/IF, ELISA, IHC
Reactivity	Human, Mouse, Rat

Package

100 µg

Applications

Application Note

*Optimal dilutions/concentrations should be determined by the researcher.

Suggested dilution	Recommended dilution
WB	1:500
ICC/IF	1:200
ELISA	1:10000
IHC	1:200

Not tested in other applications.

Calculated MW 124 kDa. ([Note](#))

Properties

Form	Liquid
Buffer	Tris/Glycine, 0.5% BSA, 30% Glycerol
Preservative	0.02% Sodium azide
Storage	Store as concentrated solution. Centrifuge briefly prior to opening vial. For short-term storage (1-2 weeks), store at 4°C. For long-term storage, aliquot and store at -20°C or below. Avoid multiple freeze-thaw cycles.
Concentration	0.75-1.20 mg/ml (Please refer to the vial label for the specific concentration.)
Immunogen	Synthetic C-terminal peptide corresponding to unique amino acid sequences on Particulate Guanylyl Cyclase F protein.
Purification	Purified by affinity chromatography
Conjugation	Unconjugated

Note

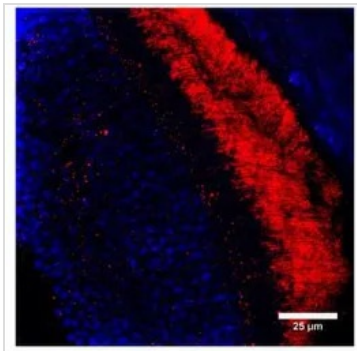
For laboratory research use only. Not for any clinical, therapeutic, or diagnostic use in humans or animals. Not for animal or human consumption.

Purchasers shall not, and agree not to enable third parties to, analyze, copy, reverse engineer or otherwise attempt to determine the structure or sequence of the product.



For full product information, images and publications, please visit our [website](#).

DATA IMAGES

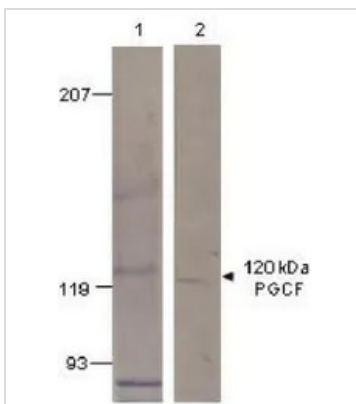


GTX14789 IHC Image

IHC analysis of mouse retina tissue (photoreceptor outer segments) using GTX14789 GUCY2F antibody.

Red : Primary antibody

Blue : Nuclei



GTX14789 WB Image

WB analysis of PGCF recombinant protein using GTX14789 GUCY2F antibody.

Lane 1 : Pre-immune serum

Lane 2 : Primary antibody

Dilution : 1:500



For full product information, images and publications, please visit our [website](https://www.genetex.com).