

Procalcitonin antibody [44D9]

Cat. No. GTX14817

Host	Mouse
Clonality	Monoclonal
Isotype	IgG2a
Applications	WB, ELISA, Sandwich ELISA
Reactivity	Human

Package
100 µg

Applications

Application Note

*Optimal dilutions/concentrations should be determined by the researcher.

Suggested dilution	Recommended dilution
WB	Assay dependent
ELISA	Assay dependent
Sandwich ELISA	Assay dependent

Note : Capture : GTX11490, Detection : GTX14817

Not tested in other applications.

Properties

Form	Liquid
Buffer	PBS
Preservative	0.09% Sodium azide
Storage	Store as concentrated solution. Centrifuge briefly prior to opening vial. Store at 4°C.
Concentration	Batch dependent (Please refer to the vial label for the specific concentration.)
Immunogen	Fragments of human PCT conjugated with carrier protein.
Purification	Protein A purified
Conjugation	Unconjugated

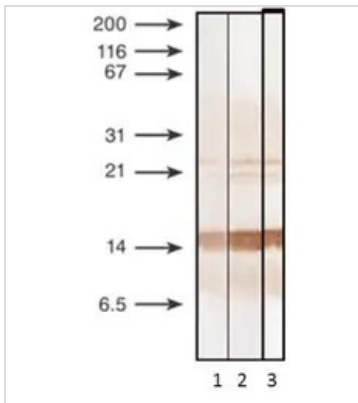
Note

For laboratory research use only. Not for any clinical, therapeutic, or diagnostic use in humans or animals. Not for animal or human consumption.

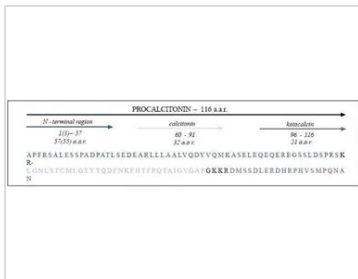
Purchasers shall not, and agree not to enable third parties to, analyze, copy, reverse engineer or otherwise attempt to determine the structure or sequence of the product.



For full product information, images and publications, please visit our [website](#).

DATA IMAGES

GTx14817 WB Image

Detection of human recombinant PCT by monoclonal anti- bodies specific to N-terminal fragment of PCT after 15% SDS-PAGE in reducing conditions. Antigen loaded - 100 ng/track. 1 – GTx14816/Procalcitonin antibody [6F10] 2 – GTx14813/Procalcitonin antibody [27A3] 3 – GTx14817/Procalcitonin antibody [44d9]


GTx14817 Image


For full product information, images and publications, please visit our [website](https://www.genetex.com).