

# Calcitonin antibody [13f2]

**Cat. No. GTX14818**

<b>Host</b>	Mouse
<b>Clonality</b>	Monoclonal
<b>Isotype</b>	IgG1
<b>Applications</b>	WB, ELISA, EIA
<b>Reactivity</b>	Human

**Package**  
100 µg

## Applications

### Application Note

\*Optimal dilutions/concentrations should be determined by the researcher.

Suggested dilution	Recommended dilution
WB	Assay dependent
ELISA	Assay dependent
EIA	Assay dependent

Not tested in other applications.

## Properties

<b>Form</b>	Liquid
<b>Buffer</b>	PBS
<b>Preservative</b>	0.09% Sodium azide
<b>Storage</b>	Store as concentrated solution. Centrifuge briefly prior to opening vial. Store at 4°C.
<b>Concentration</b>	Batch dependent (Please refer to the vial label for the specific concentration.)
<b>Immunogen</b>	Calcitonin protein fragment (purified) (Human) (see figure).
<b>Purification</b>	Protein A purified
<b>Conjugation</b>	Unconjugated

### Note

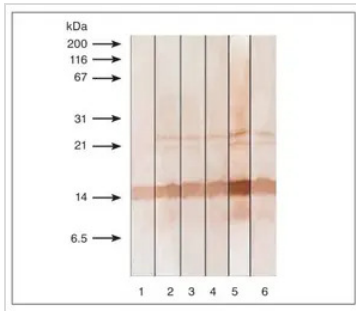
For laboratory research use only. Not for any clinical, therapeutic, or diagnostic use in humans or animals. Not for animal or human consumption.

Purchasers shall not, and agree not to enable third parties to, analyze, copy, reverse engineer or otherwise attempt to determine the structure or sequence of the product.



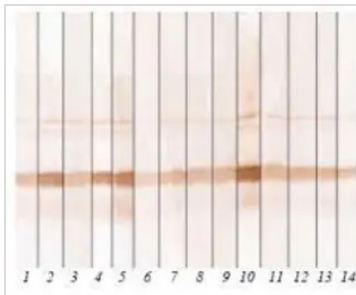
For full product information, images and publications, please visit our [website](#).

DATA IMAGES



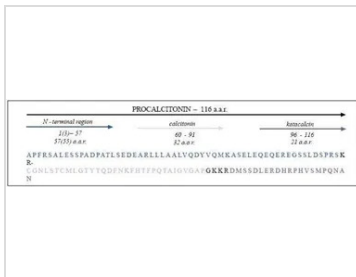
**GTX14818 WB Image**

Detection of human recombinant PCT in Western blotting by monoclonal antibodies specific to calcitonin following 15% SDS-PAGE in reducing conditions. Antigen loaded - 100 ng/lane; Lane 1: Calcitonin antibody [13B9] (GTX11484); Lane 2: Calcitonin antibody [13F2] (GTX14818); Lane 3: Calcitonin antibody [13G11] (GTX14819); Lane 4: Calcitonin antibody [14A2] (GTX11496); Lane 5: Calcitonin antibody [16B5] (GTX11493); Lane 6: Calcitonin antibody [24B2] (GTX11497)



**GTX14818 WB Image**

Immunodetection of human recombinant procalcitonin in WB by a range of monoclonal antibodies available which detect different fragments of the protein, N-terminal, calcitonin or calcitonin, (see immunogenesection and related figure). Anti- N-terminal anti



**GTX14818 Image**



For full product information, images and publications, please visit our [website](https://www.genetex.com).