

PPM1A antibody [p6c7]

Cat. No. GTX14824

Host	Mouse
Clonality	Monoclonal
Isotype	IgG2b
Applications	WB, ELISA
Reactivity	Human, Mouse

Package
100 µl

Applications

Application Note

ELISA: Use at an assay dependent dilution. WB: Use at a dilution of 1/250 - 1/1000. Predicted molecular weight: 42 kDa. Optimal dilutions/concentrations should be determined by the end user.

Calculated MW 42 kDa. ([Note](#))

Properties

Form	Liquid
Buffer	PBS
Preservative	0.1% Sodium azide
Storage	Store as concentrated solution. Centrifuge briefly prior to opening vial. For short-term storage (1-2 weeks), store at 4°C. For long-term storage, aliquot and store at -20°C or below. Avoid multiple freeze-thaw cycles.
Concentration	0.1 mg/ml (Please refer to the vial label for the specific concentration.)
Immunogen	Recombinant full length protein (Human).
Purification	Protein G purified
Conjugation	Unconjugated

Note

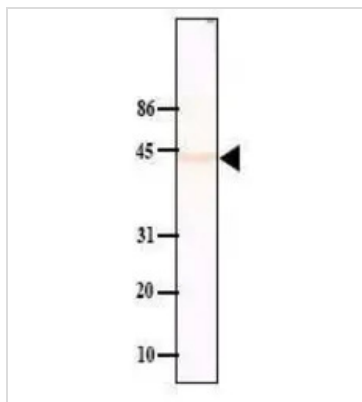
For laboratory research use only. Not for any clinical, therapeutic, or diagnostic use in humans or animals. Not for animal or human consumption.

Purchasers shall not, and agree not to enable third parties to, analyze, copy, reverse engineer or otherwise attempt to determine the structure or sequence of the product.



For full product information, images and publications, please visit our [website](#).

DATA IMAGES



GTX14824 WB Image

Western blot analysis of mouse liver cytosol extract using GTX14824 at a dilution of 1/250. Proteins were visualised using a goat anti-mouse secondary antibody conjugated to HRP and a DAB detection system.



For full product information, images and publications, please visit our [website](https://www.genetex.com).