

NPR-A antibody

Cat. No. GTX14918

Host	Rabbit
Clonality	Polyclonal
Isotype	IgG
Applications	WB, ICC/IF, IHC-Wm, IP, ELISA, IHC
Reactivity	Human, Mouse, Rat

Package
100 µg

Applications

Application Note

*Optimal dilutions/concentrations should be determined by the researcher.

Suggested dilution	Recommended dilution
WB	1:500
ICC/IF	1:25-1:250
IHC-Wm	Assay dependent
IP	1:200
ELISA	1:10000
IHC	1:25-1:250

Not tested in other applications.

Calculated MW 119 kDa. ([Note](#))

Product Note The selective antibodies were generated against conserved sequences near the N terminus and the C terminal end of the protein that are unique to PGCA protein. The PGCA antibody labels a 127 to 130 kDa protein in various tissues.

Properties

Form	Liquid
Buffer	Tris/Glycine, 0.5% BSA, 30% Glycerol
Preservative	0.02% Sodium azide
Storage	Store as concentrated solution. Centrifuge briefly prior to opening vial. For short-term storage (1-2 weeks), store at 4°C. For long-term storage, aliquot and store at -20°C or below. Avoid multiple freeze-thaw cycles.
Concentration	0.85 mg/ml (Please refer to the vial label for the specific concentration.)
Immunogen	Synthetic peptide corresponding to C terminal amino acids 1042-1057 of Human NPR-A protein. Sequence: VRTYWLLGERGCSTRG
Purification	Purified by affinity chromatography



For full product information, images and publications, please visit our [website](#).

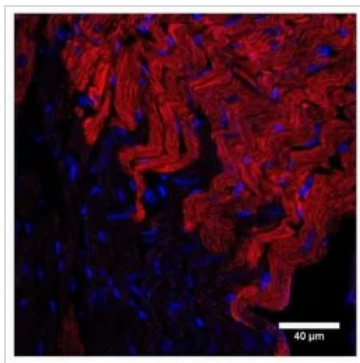
Conjugation

Unconjugated

Note

For laboratory research use only. Not for any clinical, therapeutic, or diagnostic use in humans or animals. Not for animal or human consumption.

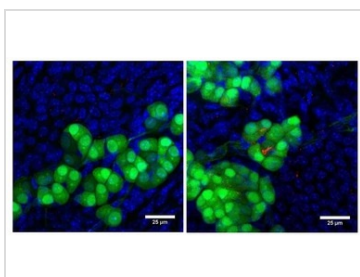
Purchasers shall not, and agree not to enable third parties to, analyze, copy, reverse engineer or otherwise attempt to determine the structure or sequence of the product.

DATA IMAGES

GTx14918 IHC Image

IHC analysis of mouse heart tissue using GTx14918 NPR-A antibody.

Red : Primary antibody

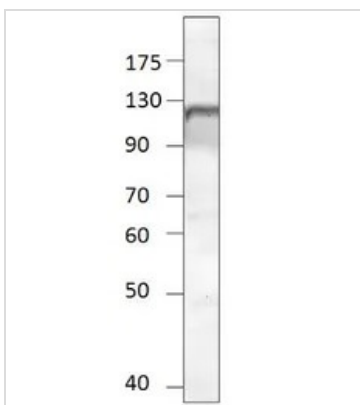
Blue : Nuclei


GTx14918 IHC-Wm Image

IHC-Wm analysis of mouse nose tissue using GTx14918 NPR-A antibody with (Left) or without (Right) blocking peptide.

Red : Primary antibody

Green : Greneberg ganglion neurons


GTx14918 WB Image

WB analysis of PGCA recombinant protein using GTx14918 NPR-A antibody.

Dilution : 1:500



For full product information, images and publications, please visit our [website](#).