

Bestrophin antibody

Cat. No. GTX14927

Host	Rabbit
Clonality	Polyclonal
Isotype	IgG
Applications	WB, ICC/IF, IHC-P, IHC-Fr, IP, ELISA, IHC
Reactivity	Human, Mouse, Rat

References (2)

Package

100 µg

Applications

Application Note

*Optimal dilutions/concentrations should be determined by the researcher.

Suggested dilution	Recommended dilution
WB	1:500
ICC/IF	1:100
IHC-P	Assay dependent
IHC-Fr	Assay dependent
IP	1:200
ELISA	1:10000
IHC	1:100

Not tested in other applications.

Calculated MW 68 kDa. ([Note](#))

Properties

Form	Liquid
Buffer	Tris/Glycine, 0.5% BSA, 30% Glycerol
Preservative	0.02% Sodium azide
Storage	Store as concentrated solution. Centrifuge briefly prior to opening vial. For short-term storage (1-2 weeks), store at 4°C. For long-term storage, aliquot and store at -20°C or below. Avoid multiple freeze-thaw cycles.
Concentration	0.68 mg/ml (Please refer to the vial label for the specific concentration.)
Immunogen	N-epitope Synthetic peptide corresponding to unique amino acid sequences on human Bestrophin 1 protein.
Purification	Purified by affinity chromatography
Conjugation	Unconjugated

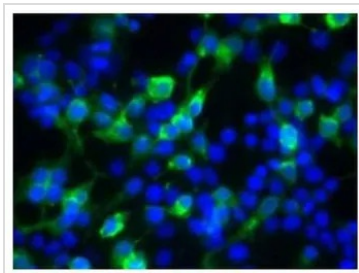


For full product information, images and publications, please visit our [website](#).

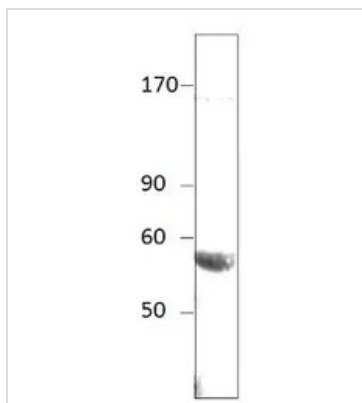
For laboratory research use only. Not for any clinical, therapeutic, or diagnostic use in humans or animals. Not for animal or human consumption.

Note

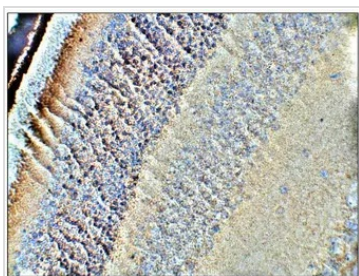
Purchasers shall not, and agree not to enable third parties to, analyze, copy, reverse engineer or otherwise attempt to determine the structure or sequence of the product.

DATA IMAGES

GTx14927 ICC/IF Image

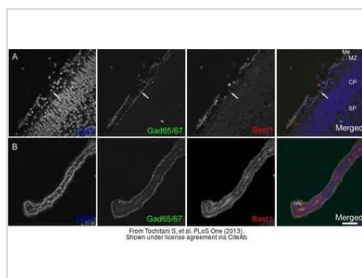
ICC/IF analysis of cells (basolateral cell membranes) using GTx14927 Bestrophin antibody.
Dilution : 1:100


GTx14927 WB Image

WB analysis of Bestrophin recombinant protein using GTx14927 Bestrophin antibody.
Dilution : 1:500


GTx14927 IHC-P Image

IHC-P analysis of mouse retina tissue using GTx14927 Bestrophin antibody.
Dilution : 1:50


GTx14927 IHC-Fr Image

The data was published in the journal PLoS One in 2013. [PMID: 23437266](https://doi.org/10.1371/journal.pone.0234372)



For full product information, images and publications, please visit our [website](https://www.genetex.com).