

BMP2 antibody

Cat. No. GTX14933

Host	Rabbit
Clonality	Polyclonal
Isotype	IgG
Applications	WB, ICC/IF, IHC-P, IHC-Fr, IP, Dot, ELISA
Reactivity	Human, Mouse, Rat, Monkey, Baboon

References (1)

Package

100 µg

Applications

Application Note

*Optimal dilutions/concentrations should be determined by the researcher.

Suggested dilution	Recommended dilution
WB	1:200
ICC/IF	1:2000
IHC-P	Assay dependent
IHC-Fr	Assay dependent
IP	1:200-1:500
Dot	Assay dependent
ELISA	1:2000

Not tested in other applications.

Calculated MW 45 kDa. ([Note](#))

Properties

Form	Liquid
Buffer	Tris/Glycine, 0.5% BSA, 30% Glycerol
Preservative	0.02% Sodium azide
Storage	Store as concentrated solution. Centrifuge briefly prior to opening vial. For short-term storage (1-2 weeks), store at 4°C. For long-term storage, aliquot and store at -20°C or below. Avoid multiple freeze-thaw cycles.
Concentration	0.73 mg/ml (Please refer to the vial label for the specific concentration.)
Immunogen	Synthetic peptide corresponding to Mouse BMP2 amino acid region 45-60 conjugated to Keyhole Limpet Haemocyanin (KLH). Sequence: SEDVLSEFELRLLSMF
Purification	Purified by affinity chromatography
Conjugation	Unconjugated

For full product information, images and publications, please visit our [website](#).

For laboratory research use only. Not for any clinical, therapeutic, or diagnostic use in humans or animals. Not for animal or human consumption.

Note

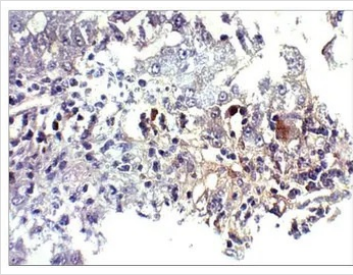
Purchasers shall not, and agree not to enable third parties to, analyze, copy, reverse engineer or otherwise attempt to determine the structure or sequence of the product.

DATA IMAGES

GTX14933 IHC-P Image

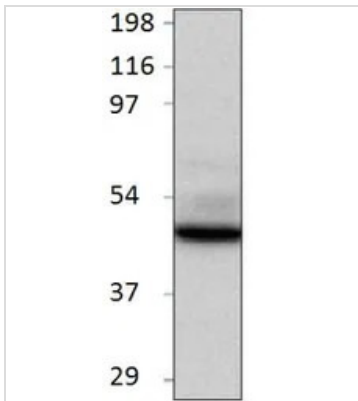
IHC-P analysis of mouse heart tissue using GTX14933 BMP2 antibody.

Dilution : 1:100


GTX14933 IHC-P Image

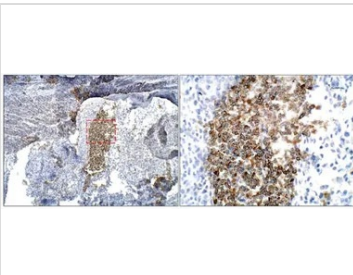
IHC-P analysis of baboon liver tissue using GTX14933 BMP2 antibody.

Dilution : 1:100


GTX14933 WB Image

WB analysis of BMP2 recombinant protein using GTX14933 BMP2 antibody.

Dilution : 1:500


GTX14933 IHC-P Image

IHC-P analysis of mouse embryo tissue using GTX14933 BMP2 antibody.

Dilution : 1:50



For full product information, images and publications, please visit our [website](https://www.genetex.com).