

BMP8 antibody

Cat. No. GTX14934

Host	Rabbit
Clonality	Polyclonal
Isotype	IgG
Applications	WB, IP, ELISA
Reactivity	Human, Mouse, Rat

Package
100 µg

Applications

Application Note

*Optimal dilutions/concentrations should be determined by the researcher.

Suggested dilution	Recommended dilution
WB	1:500-1:1000
IP	1:200
ELISA	1:2000

Not tested in other applications.

Calculated MW 45 kDa. ([Note](#))

Properties

Form	Liquid
Buffer	Tris/Glycine, 0.5% BSA, 30% Glycerol
Preservative	0.02% Sodium azide
Storage	Store as concentrated solution. Centrifuge briefly prior to opening vial. For short-term storage (1-2 weeks), store at 4°C. For long-term storage, aliquot and store at -20°C or below. Avoid multiple freeze-thaw cycles.
Concentration	0.57-0.68 mg/ml (Please refer to the vial label for the specific concentration.)
Immunogen	Synthetic peptide taken within amino acid region 160-200 on human BMP8 protein
Purification	Purified by affinity chromatography
Conjugation	Unconjugated

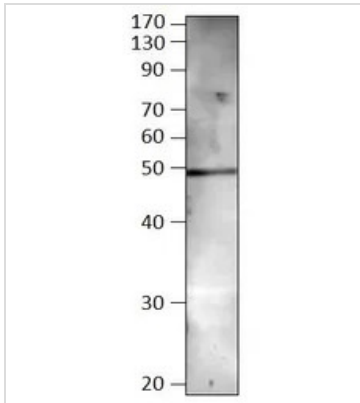
Note

For laboratory research use only. Not for any clinical, therapeutic, or diagnostic use in humans or animals. Not for animal or human consumption.

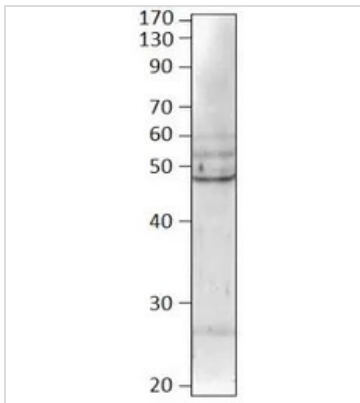
Purchasers shall not, and agree not to enable third parties to, analyze, copy, reverse engineer or otherwise attempt to determine the structure or sequence of the product.



For full product information, images and publications, please visit our [website](#).

DATA IMAGES

GTX14934 WB Image

WB analysis of BMP8 recombinant protein using GTX14934 BMP8 antibody.
Dilution : 1:500


GTX14934 WB Image

WB analysis of human chondrocyte lysate using GTX14934 BMP8 antibody.
Dilution : 1:500



For full product information, images and publications, please visit our [website](#).