

## CXCR2 antibody

Cat. No. GTX14935

Host	Rabbit
Clonality	Polyclonal
Isotype	IgG
Applications	WB, ICC/IF, IHC-P, IHC-Fr, FCM, IP, ELISA
Reactivity	Human, Mouse, Rat

References ( 1 )

Package

100 µg

## Applications

## Application Note

\*Optimal dilutions/concentrations should be determined by the researcher.

Suggested dilution	Recommended dilution
WB	1:500
ICC/IF	1:200
IHC-P	Assay dependent
IHC-Fr	Assay dependent
FCM	Assay dependent
IP	1:250
ELISA	1:10000

Not tested in other applications.

Calculated MW 41 kDa. ( [Note](#) )

## Properties

Form	Liquid
Buffer	Tris/Glycine, 0.5% BSA, 30% Glycerol
Preservative	0.02% Sodium azide
Storage	Store as concentrated solution. Centrifuge briefly prior to opening vial. For short-term storage (1-2 weeks), store at 4°C. For long-term storage, aliquot and store at -20°C or below. Avoid multiple freeze-thaw cycles.
Concentration	~.50 mg/ml (Please refer to the vial label for the specific concentration.)
Immunogen	Synthetic peptide: EDLSNYSYSTLPFLDAAPC Corresponding to amino acids 18-39 of Human CXCR2.
Purification	Purified by affinity chromatography
Conjugation	Unconjugated

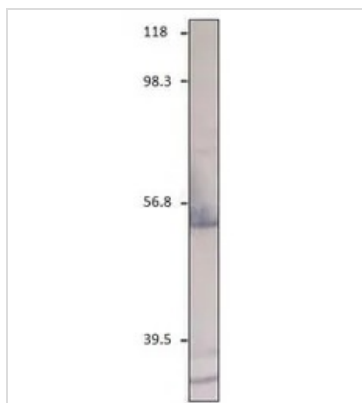
For full product information, images and publications, please visit our [website](#).

For laboratory research use only. Not for any clinical, therapeutic, or diagnostic use in humans or animals. Not for animal or human consumption.

## Note

Purchasers shall not, and agree not to enable third parties to, analyze, copy, reverse engineer or otherwise attempt to determine the structure or sequence of the product.

## DATA IMAGES



### GTx14935 WB Image

WB analysis of CXCR2 recombinant protein using GTx14935 CXCR2 antibody.

Dilution : 1:500



For full product information, images and publications, please visit our [website](#).