

SLP76 antibody [SLP-76/03]

Cat. No. GTX14940

Host	Mouse
Clonality	Monoclonal
Isotype	IgG2b
Applications	WB, IHC-P
Reactivity	Human, Mouse, Pig

Package
100 µg

Applications

Application Note

*Optimal dilutions/concentrations should be determined by the researcher.

Suggested dilution	Recommended dilution
WB	Assay dependent
IHC-P	Assay dependent

Not tested in other applications.

Calculated MW 60 kDa. ([Note](#))

Properties

Form	Liquid
Buffer	PBS
Preservative	15mM Sodium azide
Storage	Store as concentrated solution. Centrifuge briefly prior to opening vial. Store at 4°C. DO NOT FREEZE.
Concentration	1 mg/ml (Please refer to the vial label for the specific concentration.)
Immunogen	Bacterially expressed fusion protein representing amino acids 216-434 of human SLP76 with histidine tag
Purification	Protein G purified
Conjugation	Unconjugated

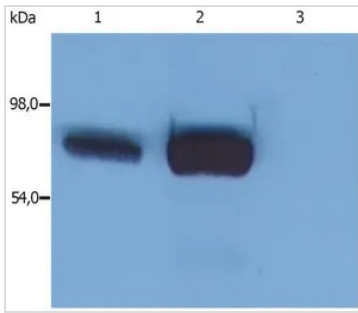
Note

For laboratory research use only. Not for any clinical, therapeutic, or diagnostic use in humans or animals. Not for animal or human consumption.

Purchasers shall not, and agree not to enable third parties to, analyze, copy, reverse engineer or otherwise attempt to determine the structure or sequence of the product.



For full product information, images and publications, please visit our [website](#).

DATA IMAGES

GTX14940 WB Image

WB analysis of various samples using GTX14940 SLP76 antibody [SLP-76/03].

Lane 1 : HPB-ALL

Lane 2 : Jurkat

Lane 3 : Ramos



For full product information, images and publications, please visit our [website](https://www.genetex.com).