

LIME antibody

Cat. No. GTX14945

Host	Rabbit
Clonality	Polyclonal
Isotype	IgG
Applications	WB, IHC-P
Reactivity	Human

Package
100 µg

Applications

Application Note

*Optimal dilutions/concentrations should be determined by the researcher.

Suggested dilution	Recommended dilution
WB	Assay dependent
IHC-P	Assay dependent

Not tested in other applications.

Calculated MW 31 kDa. ([Note](#))

Product Note This antibody reacts with the cytoplasmic domain of LIME.
We do not recommend use of this product for Mouse samples.

Properties

Form	Liquid
Buffer	PBS
Preservative	15mM Sodium azide
Storage	Store as concentrated solution. Centrifuge briefly prior to opening vial. Store at 4°C. DO NOT FREEZE.
Concentration	1 mg/ml (Please refer to the vial label for the specific concentration.)
Immunogen	Bacterially expressed intracellular fragment corresponding to aa 141-295 of human LIME.
Purification	Purified by precipitation methods From serum
Conjugation	Unconjugated

Note

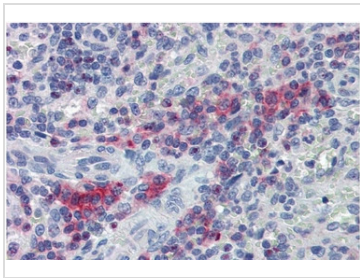
For laboratory research use only. Not for any clinical, therapeutic, or diagnostic use in humans or animals. Not for animal or human consumption.

Purchasers shall not, and agree not to enable third parties to, analyze, copy, reverse engineer or otherwise attempt to determine the structure or sequence of the product.



For full product information, images and publications, please visit our [website](#).

DATA IMAGES

**GTX14945 IHC-P Image**

IHC-P analysis of human spleen tissue using GTX14945 LIME antibody.



For full product information, images and publications, please visit our [website](#).