

Nucleolin antibody [4i51]

Cat. No. GTX14966

Host	Mouse
Clonality	Monoclonal
Isotype	IgG1
Applications	WB, ICC/IF, IP, ELISA
Reactivity	Human

Package

25 µl

Applications

Application Note

*Optimal dilutions/concentrations should be determined by the researcher.

Suggested dilution	Recommended dilution
WB	1:1000-1:5000
ICC/IF	1:10-1:100
IP	Assay dependent
ELISA	Assay dependent

Note : Suggest to fix cells with 4% paraformaldehyde and permeabilized with 0.25% Triton-X 100.

Not tested in other applications.

Calculated MW 77 kDa. ([Note](#))

Product Note We do not recommend use of this product for Mouse,Rat samples.

Properties

Form	Liquid
Buffer	Tissue culture supernatant
Preservative	0.05% Sodium azide
Storage	Store as concentrated solution. Centrifuge briefly prior to opening vial. For short-term storage (1-2 weeks), store at 4°C. For long-term storage, aliquot and store at -20°C or below. Avoid multiple freeze-thaw cycles.
Immunogen	Nuclear matrix extract from MDCK cells.
Purification	Unpurified
Conjugation	Unconjugated



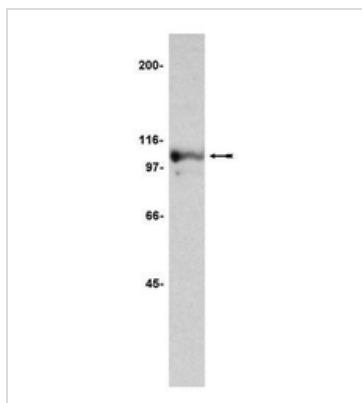
For full product information, images and publications, please visit our [website](#).

For laboratory research use only. Not for any clinical, therapeutic, or diagnostic use in humans or animals. Not for animal or human consumption.

Note

Purchasers shall not, and agree not to enable third parties to, analyze, copy, reverse engineer or otherwise attempt to determine the structure or sequence of the product.

DATA IMAGES



GTx14966 WB Image

WB analysis of HeLa nuclear extract using GTx14966 Nucleolin antibody [4i51].

Dilution : 1:5000



For full product information, images and publications, please visit our [website](#).