

## EP300 antibody [3G230]

**Cat. No. GTX14984**

<b>Host</b>	Mouse
<b>Clonality</b>	Monoclonal
<b>Isotype</b>	IgG1
<b>Applications</b>	WB, ICC/IF, IHC-P, IP
<b>Reactivity</b>	Human

Package

25 µg

## Applications

**Application Note**

\*Optimal dilutions/concentrations should be determined by the researcher.

Suggested dilution	Recommended dilution
WB	1µg/ml
ICC/IF	Assay dependent
IHC-P	1-5µg/ml
IP	Assay dependent

**Note : Antigen retrieval : Requires HIER pretreatment**

Not tested in other applications.

**Calculated MW** 264 kDa. ([Note](#))**Product Note** We do not recommend use of this product for Mouse,Rat samples.

## Properties

<b>Form</b>	Liquid
<b>Buffer</b>	PBS
<b>Preservative</b>	0.09% Sodium azide
<b>Storage</b>	Store as concentrated solution. Centrifuge briefly prior to opening vial. For short-term storage (1-2 weeks), store at 4°C. For long-term storage, aliquot and store at -20°C or below. Avoid multiple freeze-thaw cycles.
<b>Concentration</b>	Batch dependent (Please refer to the vial label for the specific concentration.)
<b>Immunogen</b>	Recombinant human p300 protein.
<b>Purification</b>	Protein A purified
<b>Conjugation</b>	Unconjugated

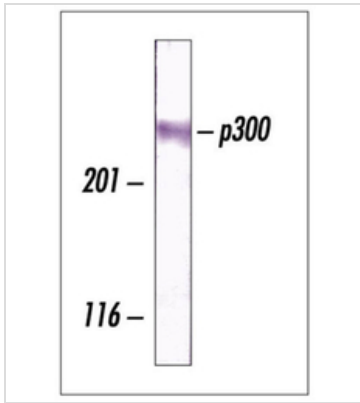


For full product information, images and publications, please visit our [website](#).

For laboratory research use only. Not for any clinical, therapeutic, or diagnostic use in humans or animals. Not for animal or human consumption.

**Note**  
Purchasers shall not, and agree not to enable third parties to, analyze, copy, reverse engineer or otherwise attempt to determine the structure or sequence of the product.

## DATA IMAGES

**GTX14984 WB Image**

WB analysis of A431 cell lysate using GTX14984 EP300 antibody [3G230].



For full product information, images and publications, please visit our [website](#).