

## LIME antibody [LIME-10]

Cat. No. GTX14987

Host	Mouse
Clonality	Monoclonal
Isotype	IgG2a
Applications	WB, IHC-P
Reactivity	Human

Package  
100 µg

## Applications

## Application Note

\*Optimal dilutions/concentrations should be determined by the researcher.

Suggested dilution	Recommended dilution
WB	Assay dependent
IHC-P	Assay dependent

Not tested in other applications.

**Calculated MW** 31 kDa. ( [Note](#) )**Product Note** This antibody reacts with the cytoplasmic domain of LIME.

## Properties

Form	Liquid
Buffer	PBS
Preservative	15mM Sodium azide
Storage	Store as concentrated solution. Centrifuge briefly prior to opening vial. Store at 4°C. DO NOT FREEZE.
Concentration	1 mg/ml (Please refer to the vial label for the specific concentration.)
Immunogen	COOH-terminal peptide comprising residues 281-296 of the human LIME conjugated to keyhole limpet hemocyanin.
Purification	Protein A purified
Conjugation	Unconjugated

## Note

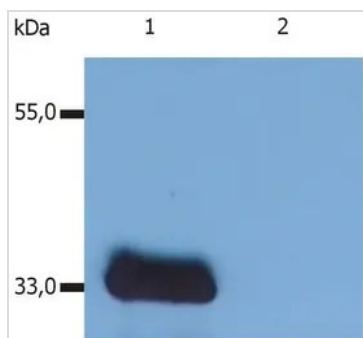
For laboratory research use only. Not for any clinical, therapeutic, or diagnostic use in humans or animals. Not for animal or human consumption.

Purchasers shall not, and agree not to enable third parties to, analyze, copy, reverse engineer or otherwise attempt to determine the structure or sequence of the product.



For full product information, images and publications, please visit our [website](#).

## DATA IMAGES



### GTX14987 WB Image

WB analysis of various samples using GTX14987 LIME antibody [LIME-10].

Lane 1 : J77 transfected with LIME

Lane 2 : non-transfected J77 (cells are essentially devoid of endogenous LIME expression)



For full product information, images and publications, please visit our [website](https://www.genetex.com).