

Glycophorin A antibody [HIR2]

Cat. No. GTX15009

Host	Mouse
Clonality	Monoclonal
Isotype	IgG2b
Applications	ICC/IF, IHC-P, IHC-Fr, FCM, Agglutination
Reactivity	Human

References (1)

Package

100 µg

Applications

Application Note

*Optimal dilutions/concentrations should be determined by the researcher.

Suggested dilution	Recommended dilution
ICC/IF	Assay dependent
IHC-P	Assay dependent
IHC-Fr	Assay dependent
FCM	Assay dependent
Agglutination	Assay dependent

Not tested in other applications.

Product Note This antibody recognizes N-terminal portion of glycophorin A (and weakly of glycophorin B).

Properties

Form	Liquid
Buffer	PBS
Preservative	15mM Sodium azide
Storage	Store as concentrated solution. Centrifuge briefly prior to opening vial. Store at 4°C. DO NOT FREEZE.
Concentration	1 mg/ml (Please refer to the vial label for the specific concentration.)
Immunogen	Synthetic peptide (Human, N-terminal)
Purification	Protein A purified
Conjugation	Unconjugated

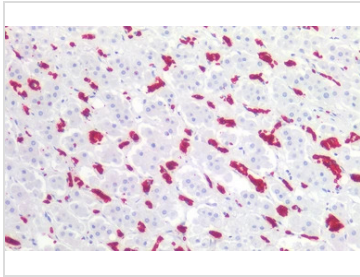


For full product information, images and publications, please visit our [website](#).

For laboratory research use only. Not for any clinical, therapeutic, or diagnostic use in humans or animals. Not for animal or human consumption.

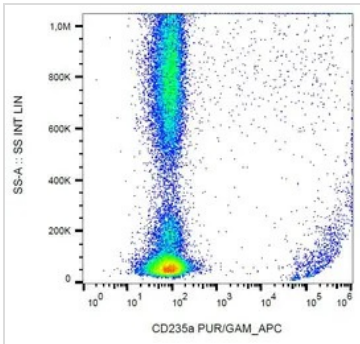
Note
 Purchasers shall not, and agree not to enable third parties to, analyze, copy, reverse engineer or otherwise attempt to determine the structure or sequence of the product.

DATA IMAGES



GTX15009 IHC-P Image

IHC-P analysis of human adrenal tissue using GTX15009 Glycophorin A antibody [HIR2].
 Dilution : 10µg/ml



GTX15009 FCM Image

FACS analysis of human peripheral blood using GTX15009 Glycophorin A antibody [HIR2].



For full product information, images and publications, please visit our [website](#).