

## CD41 antibody [HIP8]

Cat. No. GTX15021

Host	Mouse
Clonality	Monoclonal
Isotype	IgG1
Applications	IHC-Fr, FCM
Reactivity	Human, Primate

Package  
100 µg

## Applications

## Application Note

\*Optimal dilutions/concentrations should be determined by the researcher.

Suggested dilution	Recommended dilution
IHC-Fr	Assay dependent
FCM	Assay dependent

Not tested in other applications.

## Product Note

This antibody reacts with alpha (a) subunit of CD41 (heavy chain; 120 kDa). The antibody HIP8 blocks platelet aggregation and completely inhibits ADP-, epinephrine-, and collagen-induced platelet activation, and partially inhibits ristocetin- and thrombin-induced platelet activation.

## Properties

Form	Liquid
Buffer	PBS
Preservative	15mM Sodium azide
Storage	Store as concentrated solution. Centrifuge briefly prior to opening vial. Store at 4°C. DO NOT FREEZE.
Concentration	1 mg/ml (Please refer to the vial label for the specific concentration.)
Immunogen	Full length native protein (purified) (Human).
Purification	Protein A purified
Conjugation	Unconjugated

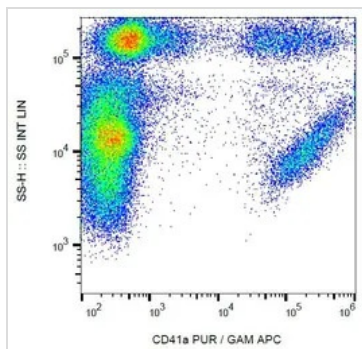
## Note

For laboratory research use only. Not for any clinical, therapeutic, or diagnostic use in humans or animals. Not for animal or human consumption.

Purchasers shall not, and agree not to enable third parties to, analyze, copy, reverse engineer or otherwise attempt to determine the structure or sequence of the product.



For full product information, images and publications, please visit our [website](#).

**DATA IMAGES**

**GTX15021 FCM Image**

FACS analysis of human peripheral blood using GTX15021 CD41a antibody [HIP8].



For full product information, images and publications, please visit our [website](#).