

BCAP31 antibody [CC-1]

Cat. No. GTX15044

Host	Rat
Clonality	Monoclonal
Isotype	IgG2a
Applications	WB, ICC/IF, IHC-Fr, IP, ELISA
Reactivity	Human, Mouse, Bovine, Hamster, Primate

References (1)

Package

100 µl

Applications

Application Note

*Optimal dilutions/concentrations should be determined by the researcher.

Suggested dilution	Recommended dilution
WB	1:1,500 - 1:6,000
ICC/IF	1:200-1:1000
IHC-Fr	1:1000 - 1:10000
IP	Assay dependent
ELISA	Assay dependent

Not tested in other applications.

Calculated MW 28 kDa. ([Note](#))

Properties

Form	Liquid
Buffer	Ascites
Preservative	0.05% Sodium azide
Storage	Store as concentrated solution. Centrifuge briefly prior to opening vial. For short-term storage (1-2 weeks), store at 4°C. For long-term storage, aliquot and store at -20°C or below. Avoid multiple freeze-thaw cycles.
Immunogen	Amino acid residues 230-246 of BAP31 protein.
Purification	Unpurified
Conjugation	Unconjugated

Note

For laboratory research use only. Not for any clinical, therapeutic, or diagnostic use in humans or animals. Not for animal or human consumption.

Purchasers shall not, and agree not to enable third parties to, analyze, copy, reverse engineer or otherwise attempt to determine the structure or sequence of the product.

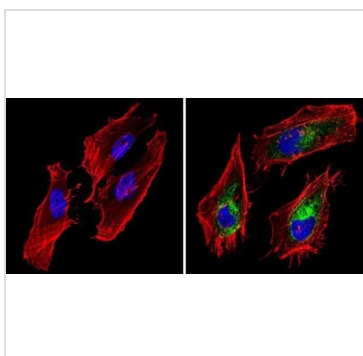


For full product information, images and publications, please visit our [website](#).

DATA IMAGES

**GTX15044 IHC-Fr Image**

IHC-Fr analysis of baboon adrenal gland tissue using GTX15044 BCAP31 antibody [CC-1].

**GTX15044 ICC/IF Image**

ICC/IF analysis of HeLa cells using GTX15044 BCAP31 antibody [CC-1]. Cells were probed without (left) or with(right) an antibody.

Green : Primary antibody

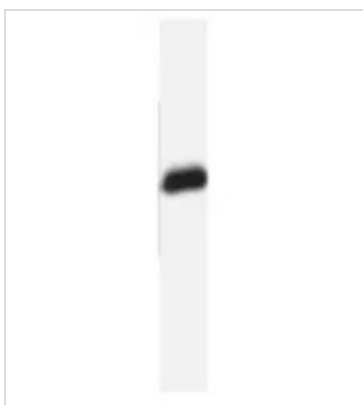
Blue : Nuclei

Red : Actin

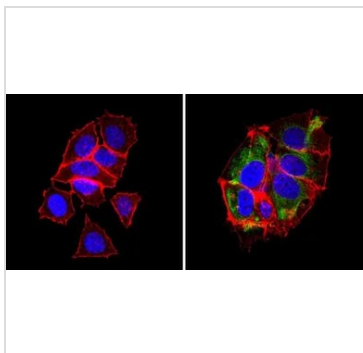
Fixation : Formalin

Permeabilization : 0.1% Triton X-100 in TBS for 5-10 minutes

Dilution : 1:200 incubated overnight at 4°C

**GTX15044 WB Image**

WB analysis of samples using GTX15044 BCAP31 antibody [CC-1].

**GTX15044 ICC/IF Image**

ICC/IF analysis of MCF-7 cells using GTX15044 BCAP31 antibody [CC-1]. Cells were probed without (left) or with(right) an antibody.

Green : Primary antibody

Blue : Nuclei

Red : Actin

Fixation : Formalin

Permeabilization : 0.1% Triton X-100 in TBS for 5-10 minutes

Dilution : 1:200 incubated overnight at 4°C



For full product information, images and publications, please visit our [website](#).