

C/EBP alpha antibody [15C8]

Cat. No. GTX15047

Host	Mouse
Clonality	Monoclonal
Isotype	IgG
Applications	WB, ICC/IF, IP
Reactivity	Human, Mouse, Rat

Package
50 µg

Applications

Application Note

*Optimal dilutions/concentrations should be determined by the researcher.

Suggested dilution	Recommended dilution
WB	2 µg/ml
ICC/IF	Assay dependent
IP	Assay dependent

Not tested in other applications.

Calculated MW	37 kDa. (Note)
Product Note	This antibody is specific to the amino terminal region of C/EBP alpha.

Properties

Form	Liquid
Buffer	PBS, 0.1% BSA
Preservative	0.05% Sodium azide
Storage	Store as concentrated solution. Centrifuge briefly prior to opening vial. For short-term storage (1-2 weeks), store at 4°C. For long-term storage, aliquot and store at -20°C or below. Avoid multiple freeze-thaw cycles.
Concentration	1 mg/ml (Please refer to the vial label for the specific concentration.)
Immunogen	Synthetic peptide corresponding to residues M(1) E S A D F Y E V E P R P P(14) of mouse C/EBP alpha.
Purification	Protein G purified
Conjugation	Unconjugated



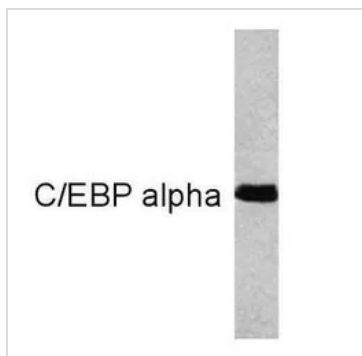
For full product information, images and publications, please visit our [website](#).

For laboratory research use only. Not for any clinical, therapeutic, or diagnostic use in humans or animals. Not for animal or human consumption.

Note

Purchasers shall not, and agree not to enable third parties to, analyze, copy, reverse engineer or otherwise attempt to determine the structure or sequence of the product.

DATA IMAGES



GTX15047 WB Image

WB analysis of C/EBP alpha transfected 293T cells using GTX15047 C/EBP alpha antibody [15C8].



For full product information, images and publications, please visit our [website](#).