

## C/EBP beta antibody [1H7]

Cat. No. GTX15050

Host	Mouse
Clonality	Monoclonal
Isotype	IgG
Application	WB, ICC/IF, IP, ChIP assay, Gel supershift assays
Reactivity	Mouse, Rat

Reference ( 3 )

Package

50 µg

## APPLICATION

## Application Note

\*Optimal dilutions/concentrations should be determined by the researcher.

Suggested dilution	Recommended dilution
WB	1 µg/ml
ICC/IF	4 µg/ml
IP	Assay dependent
ChIP assay	Assay dependent
Gel supershift assays	Assay dependent

Not tested in other applications.

**Calculated MW** 31 kDa. ( [Note](#) )

**Product Note** This antibody detects the LAP\*, LAP and LIP isoforms of C/EBP beta.

## PROPERTIES

Form	Liquid
Buffer	PBS, 0.1% BSA
Preservative	0.05% Sodium azide
Storage	Store as concentrated solution. Centrifuge briefly prior to opening vial. For short-term storage (1-2 weeks), store at 4°C. For long-term storage, aliquot and store at -20°C or below. Avoid multiple freeze-thaw cycles.
Concentration	1 mg/ml (Please refer to the vial label for the specific concentration.)
Immunogen	Recombinant mouse LIP.
Purification	Protein G purified
Conjugation	Unconjugated



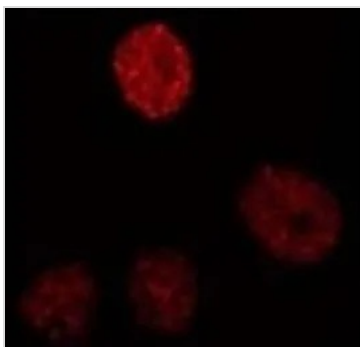
For full product information, images and publications, please visit our [website](#).

## Note

For laboratory research use only. Not for any clinical, therapeutic, or diagnostic use in humans or animals. Not for animal or human consumption.

Purchasers shall not, and agree not to enable third parties to, analyze, copy, reverse engineer or otherwise attempt to determine the structure or sequence of the product.

## DATA IMAGES



### GTX15050 ICC/IF Image

ICC/IF analysis of P388D1 cells using GTX15050 C/EBP beta antibody [1H7].



For full product information, images and publications, please visit our [website](#).