

SCP1 antibody

Cat. No. GTX15087

Host	Rabbit
Clonality	Polyclonal
Isotype	IgG
Applications	WB, ICC/IF
Reactivity	Human, Mouse, Rat, Primate

References (2)

Package

100 µl

Applications

Application Note

*Optimal dilutions/concentrations should be determined by the researcher.

Suggested dilution	Recommended dilution
WB	Assay dependent
ICC/IF	1:300 - 1:750

Not tested in other applications.

Calculated MW 114 kDa. ([Note](#))

Properties

Form	Liquid
Buffer	Tris-Citrate/Phosphate
Preservative	0.1% Sodium azide
Storage	Store as concentrated solution. Centrifuge briefly prior to opening vial. Store at 4°C. DO NOT FREEZE.
Concentration	1 mg/ml (Please refer to the vial label for the specific concentration.)
Immunogen	A C-terminal synthetic peptide made to the human SCP1 protein sequence. [UniProt# Q15431]
Purification	Purified by antigen-affinity chromatography
Conjugation	Unconjugated

Note

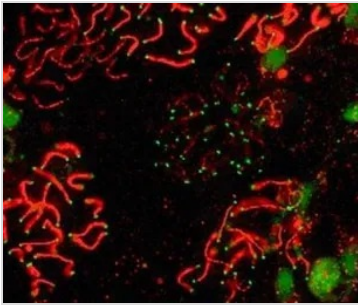
For laboratory research use only. Not for any clinical, therapeutic, or diagnostic use in humans or animals. Not for animal or human consumption.

Purchasers shall not, and agree not to enable third parties to, analyze, copy, reverse engineer or otherwise attempt to determine the structure or sequence of the product.



For full product information, images and publications, please visit our [website](#).

DATA IMAGES

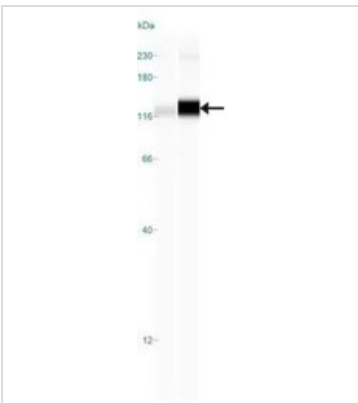


GTX15087 ICC/IF Image

ICC/IF analysis of mouse pachytene preparation using GTX15087 SCP1 antibody.

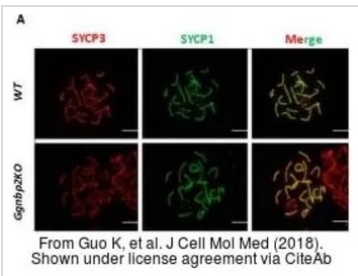
Red : primary antibody

Green : CDK2



GTX15087 WB Image

WB analysis of human testis (left) and mouse testis (right) lysate using GTX15087 SCP1 antibody.



GTX15087 ICC/IF Image

The data was published in the journal J Cell Mol Med in 2018. [PMID: 30055035](https://pubmed.ncbi.nlm.nih.gov/30055035/)



For full product information, images and publications, please visit our [website](https://www.genetex.com).