

SCP1 antibody

Cat. No. GTX15090

Host	Rabbit
Clonality	Polyclonal
Isotype	IgG
Application	WB, ICC/IF, IHC-P, IHC-Fr, IP, ChIP assay
Reactivity	Mouse, Rat

Reference (1)
Package
100 µl

APPLICATION

Application Note

*Optimal dilutions/concentrations should be determined by the researcher.

Suggested dilution	Recommended dilution
WB	Assay dependent
ICC/IF	1:100 - 1:750
IHC-P	1:750
IHC-Fr	1:750
IP	Assay dependent
ChIP assay	Assay dependent

Not tested in other applications.

Calculated MW 116 kDa. ([Note](#))

Product Note We do not recommend use of this product for Human samples.

PROPERTIES

Form	Liquid
Buffer	PBS
Preservative	0.02% Sodium azide
Storage	Store as concentrated solution. Centrifuge briefly prior to opening vial. For short-term storage (1-2 weeks), store at 4°C. For long-term storage, aliquot and store at -20°C or below. Avoid multiple freeze-thaw cycles.
Concentration	1 mg/ml (Please refer to the vial label for the specific concentration.)
Immunogen	A synthetic peptide made to the C-terminus of the mouse SCP1 protein sequence. [UniProt# Q62209]
Purification	Purified by antigen-affinity chromatography
Conjugation	Unconjugated



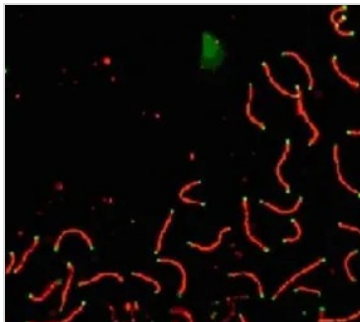
For full product information, images and publications, please visit our [website](#).

For laboratory research use only. Not for any clinical, therapeutic, or diagnostic use in humans or animals. Not for animal or human consumption.

Note

Purchasers shall not, and agree not to enable third parties to, analyze, copy, reverse engineer or otherwise attempt to determine the structure or sequence of the product.

DATA IMAGES

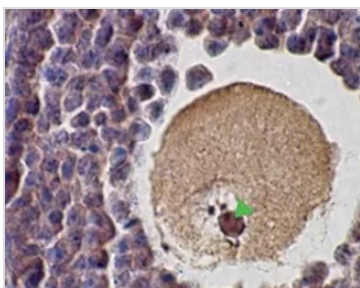


GTX15090 ICC/IF Image

ICC/IF analysis of mouse pachytene preparation using GTX15090 SCP1 antibody.

Red : primary antibody

Green : CDK2



GTX15090 IHC-P Image

IHC-P analysis of mouse ovary tissue using GTX15090 SCP1 antibody.



For full product information, images and publications, please visit our [website](#).