

Her4 / ErbB4 antibody

Cat. No. GTX15137

Host	Rabbit
Clonality	Polyclonal
Isotype	IgG
Applications	WB, IHC-P
Reactivity	Human, Mouse

Package
500 µl

Applications

Application Note

IHC-P: Use at a dilution of 1/50 for 10 min at RT. Boil tissue sections in 10mM citrate buffer, pH 6.0 for 10 min followed by cooling at RT for 20 min.
WB: Use at an assay dependent dilution. Predicted molecular weight: 146.8 kDa.
Optimal dilutions/concentrations should be determined by the end user.

Calculated MW 147 kDa. ([Note](#))

Properties

Form	Liquid
Buffer	PBS, 1% BSA
Preservative	0.09% Sodium azide
Storage	Store as concentrated solution. Centrifuge briefly prior to opening vial. Store at 4°C. DO NOT FREEZE.
Concentration	0.2 mg/ml (Please refer to the vial label for the specific concentration.)
Immunogen	Synthetic peptide (unfortunately, the amino acid sequence is considered to be commercially sensitive) (Human) (C terminal).
Purification	Immunogen affinity purified
Conjugation	Unconjugated

Note

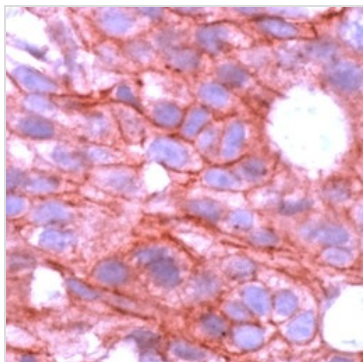
For laboratory research use only. Not for any clinical, therapeutic, or diagnostic use in humans or animals. Not for animal or human consumption.

Purchasers shall not, and agree not to enable third parties to, analyze, copy, reverse engineer or otherwise attempt to determine the structure or sequence of the product.



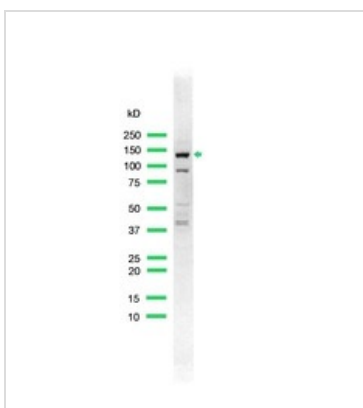
For full product information, images and publications, please visit our [website](#).

DATA IMAGES



GTX15137 IHC-P Image

IHC-P analysis of human breast carcinoma using GTX15137 Her4 / ErbB4 antibody.



GTX15137 WB Image

WB analysis of A431 cell lysate using GTX15137 Her4 / ErbB4 antibody.



For full product information, images and publications, please visit our [website](#).