

Syk antibody [SPM147]

Cat. No. GTX15238

Host	Mouse
Clonality	Monoclonal
Isotype	IgG2a
Applications	WB, IHC-P, IP, IHC
Reactivity	Human

Package
500 µl

Applications

Application Note

For IHC-P: Use at a dilution of 1-100 for 10 min. at RT. Perform heat mediated antigen retrieval before commencing with IHC staining protocol. For IP: Use at a concentration of 2µg antibody/mg protein lysate. For WB: Use at a concentration of 1 µg/ml. Predicted molecular weight: 72 kDa. Optimal dilutions/concentrations should be determined by the researcher

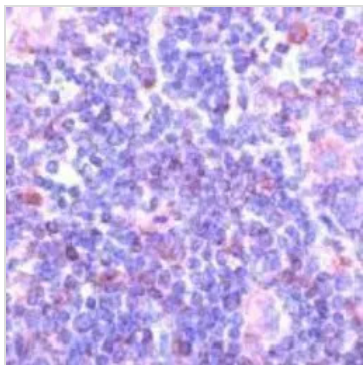
Calculated MW 72 kDa. ([Note](#))

Properties

Form	Liquid
Buffer	PBS, 1% BSA
Preservative	0.09% Sodium azide
Storage	Store as concentrated solution. Centrifuge briefly prior to opening vial. Store at 4°C. DO NOT FREEZE.
Concentration	0.2 mg/ml (Please refer to the vial label for the specific concentration.)
Immunogen	Synthetic peptide - amino acids 313-339 of Human Syk.
Purification	Protein G affinity purified
Conjugation	Unconjugated
Note	For laboratory research use only. Not for any clinical, therapeutic, or diagnostic use in humans or animals. Not for animal or human consumption. Purchasers shall not, and agree not to enable third parties to, analyze, copy, reverse engineer or otherwise attempt to determine the structure or sequence of the product.



For full product information, images and publications, please visit our [website](#).

DATA IMAGES

GTX15238 IHC Image

Human lymphoma stained with GTX15238 1/100 dilution



For full product information, images and publications, please visit our [website](#).