

# FRA2 antibody

**Cat. No. GTX15296**

<b>Host</b>	Rabbit
<b>Clonality</b>	Polyclonal
<b>Isotype</b>	IgG
<b>Applications</b>	IHC-P
<b>Reactivity</b>	Human, Mouse, Rat

**Package**  
500 µl

## Applications

### Application Note

IHC-P: Use at a dilution of 1/50 for 30 minutes at RT. Staining of formalin-fixed tissues requires boiling tissue sections in 10mM citrate buffer, pH 6.0 for 10 minutes followed by cooling at RT for 20 minutes. Optimal dilutions/concentrations should be determined by the end user.

## Properties

<b>Form</b>	Liquid
<b>Buffer</b>	PBS, 1% BSA
<b>Preservative</b>	0.09% Sodium azide
<b>Storage</b>	Store as concentrated solution. Centrifuge briefly prior to opening vial. Store at 4°C. DO NOT FREEZE.
<b>Concentration</b>	0.2 mg/ml (Please refer to the vial label for the specific concentration.)
<b>Immunogen</b>	Synthetic peptide (Human) (N terminal).
<b>Purification</b>	Immunogen affinity purified
<b>Conjugation</b>	Unconjugated

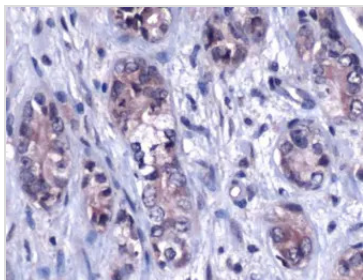
### Note

For laboratory research use only. Not for any clinical, therapeutic, or diagnostic use in humans or animals. Not for animal or human consumption.

Purchasers shall not, and agree not to enable third parties to, analyze, copy, reverse engineer or otherwise attempt to determine the structure or sequence of the product.



For full product information, images and publications, please visit our [website](#).

**DATA IMAGES**

**GTX15296 IHC-P Image**

Human Prostate Carcinoma stained with anti-FRA-2 antibody (GTX15296)



For full product information, images and publications, please visit our [website](#).