

# ACE2 antibody

**Cat. No. GTX15349**

<b>Host</b>	Rabbit
<b>Clonality</b>	Polyclonal
<b>Isotype</b>	IgG
<b>Applications</b>	WB, ICC/IF, IHC-P, ELISA
<b>Reactivity</b>	Human, Mouse, Rat

References ( 1 )

Package

100 µg

## Applications

### Application Note

\*Optimal dilutions/concentrations should be determined by the researcher.

Suggested dilution	Recommended dilution
WB	0.5 - 2 µg/mL
ICC/IF	Assay dependent
IHC-P	2 µg/mL
ELISA	Assay dependent

Not tested in other applications.

**Calculated MW** 92 kDa. ( [Note](#) )

**Product Note** Anti-ACE2 has no cross response to ACE1.

## Properties

<b>Form</b>	Liquid
<b>Buffer</b>	PBS
<b>Preservative</b>	0.02% Sodium azide
<b>Storage</b>	Store as concentrated solution. Centrifuge briefly prior to opening vial. For short-term storage (1-2 weeks), store at 4°C. For long-term storage, aliquot and store at -20°C or below. Avoid multiple freeze-thaw cycles.
<b>Concentration</b>	1 mg/ml (Please refer to the vial label for the specific concentration.)
<b>Immunogen</b>	ACE2 antibody was raised against a synthetic peptide corresponding to amino acids near the center of human ACE2. The immunogen is located within amino acids 150 - 200 of ACE2.
<b>Purification</b>	Purified by antigen-affinity chromatography
<b>Conjugation</b>	Unconjugated



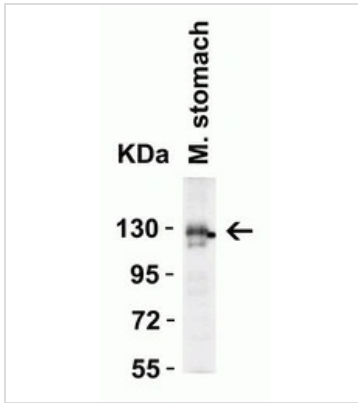
For full product information, images and publications, please visit our [website](#).

For laboratory research use only. Not for any clinical, therapeutic, or diagnostic use in humans or animals. Not for animal or human consumption.

## Note

Purchasers shall not, and agree not to enable third parties to, analyze, copy, reverse engineer or otherwise attempt to determine the structure or sequence of the product.

## DATA IMAGES

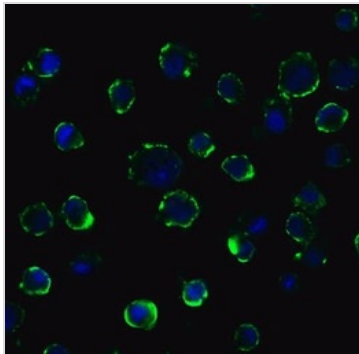


### GTx15349 WB Image

WB analysis of mouse stomach tissue lysate using GTx15349 ACE2 antibody.

Loading: 15 µg per lane

Dilution: 4µg/ml



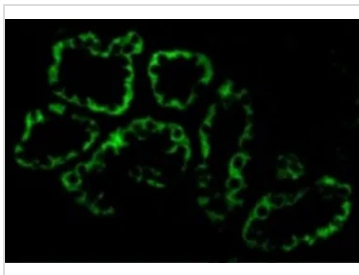
### GTx15349 ICC/IF Image

ICC/IF analysis of Caco2 cells using GTx15349 ACE2 antibody.

Dilution: 5µg/ml

Green: ACE2

Blue: DAPI



### GTx15349 ICC/IF Image

IHC-P analysis of human kidney tissue using GTx15349 ACE2 antibody.

Working concentration : 2 µg/ml



For full product information, images and publications, please visit our [website](https://www.genetex.com).