

ATF6 antibody

Cat. No. GTX15457

Host	Rabbit
Clonality	Polyclonal
Isotype	IgG
Applications	WB, IHC-P, ELISA
Reactivity	Human, Mouse, Rat

References (2)

Package

50 µg

Applications

Application Note

*Optimal dilutions/concentrations should be determined by the researcher.

Suggested dilution	Recommended dilution
WB	0.5-2 µg/mL
IHC-P	5 µg/mL
ELISA	Assay dependent

Not tested in other applications.

Calculated MW	75 kDa. (Note)
---------------	----------------------------------

Product Note	The immunogen sequence of this antibody is within the cleaved form of ATF6 alpha.
--------------	---

Properties

Form	Liquid
Buffer	PBS
Preservative	0.02% Sodium azide
Storage	Store as concentrated solution. Centrifuge briefly prior to opening vial. For short-term storage (1-2 weeks), store at 4°C. For long-term storage, aliquot and store at -20°C or below. Avoid multiple freeze-thaw cycles.
Concentration	1 mg/ml (Please refer to the vial label for the specific concentration.)
Immunogen	ATF6 antibody was raised against a 17 amino acid synthetic peptide from near the amino terminus of human ATF6. The immunogen is located within amino acids 30 - 80 of ATF6.
Purification	Purified by antigen-affinity chromatography
Conjugation	Unconjugated



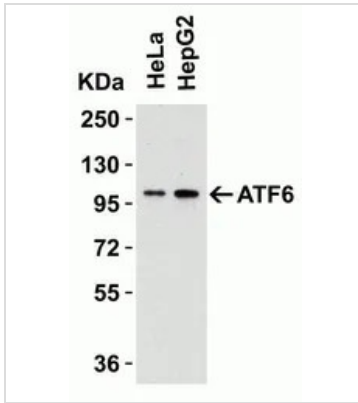
For full product information, images and publications, please visit our [website](#).

For laboratory research use only. Not for any clinical, therapeutic, or diagnostic use in humans or animals. Not for animal or human consumption.

Note

Purchasers shall not, and agree not to enable third parties to, analyze, copy, reverse engineer or otherwise attempt to determine the structure or sequence of the product.

DATA IMAGES

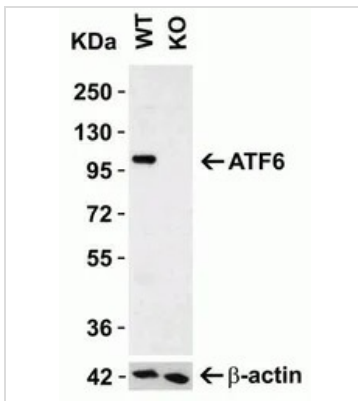


GTX15457 WB Image

WB analysis of various whole cell lysates using GTX15457 AFT6 antibody.

Dilution : 1µg/ml

Loading : 15µg per lane

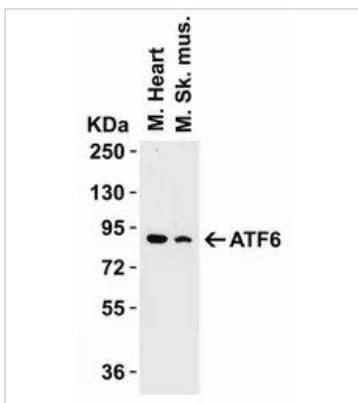


GTX15457 WB Image

WB analysis of extracts from normal (control) and ATF6 knockout (KO) HeLa cell lysates using GTX15457 AFT6 antibody.

Dilution : 0.5µg/ml

Loading : 15µg per lane



GTX15457 WB Image

WB analysis of mouse heart and mouse skeleton muscle tissue lysates using GTX15457 AFT6 antibody.

Dilution : 1µg/ml

Loading : 15µg per lane



For full product information, images and publications, please visit our [website](https://www.genetex.com).