

Presenilin 1 antibody [APS 18]

Cat. No. GTX15458

Host	Mouse
Clonality	Monoclonal
Isotype	IgG1
Applications	WB, ICC/IF, IHC-P, IP, ELISA, IHC
Reactivity	Human, Mouse, Rat, Primate

Package
200 µg

Applications

Application Note

*Optimal dilutions/concentrations should be determined by the researcher.

Suggested dilution	Recommended dilution
WB	1:50 - 1:250
ICC/IF	1:50 - 1:200
IHC-P	1:20 - 1:200
IP	Assay dependent
ELISA	1:1000
IHC	Assay dependent

Not tested in other applications.

Calculated MW 53 kDa. ([Note](#))

Product Note No cross-reactivity is seen with presenilin 2. This antibody detects an ~18 kDa protein representing PS1 CT (C-terminus fragment) and the ~46 kDa full-length PS1 from transfected SH-SY5Y cells.

Properties

Form	Liquid
Buffer	PBS, 0.1% BSA
Preservative	0.05% Sodium azide
Storage	Store as concentrated solution. Centrifuge briefly prior to opening vial. For short-term storage (1-2 weeks), store at 4°C. For long-term storage, aliquot and store at -20°C or below. Avoid multiple freeze-thaw cycles.
Concentration	1 mg/ml (Please refer to the vial label for the specific concentration.)
Immunogen	Synthetic peptide corresponding to residues CS(313)KYNAESTERESQD T V A E N D D G(334) of human PS1.
Purification	Protein G purified



For full product information, images and publications, please visit our [website](#).

Conjugation

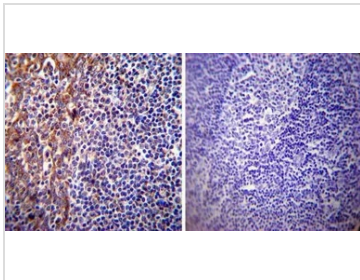
Unconjugated

Note

For laboratory research use only. Not for any clinical, therapeutic, or diagnostic use in humans or animals. Not for animal or human consumption.

Purchasers shall not, and agree not to enable third parties to, analyze, copy, reverse engineer or otherwise attempt to determine the structure or sequence of the product.

DATA IMAGES



GTX15458 IHC-P Image

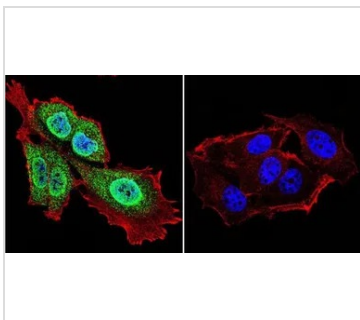
IHC-P analysis of human tonsil tissue using GTX15458 Presenilin 1 antibody [APS 18].

Left : Primary antibody

Right : Negative control without primary antibody

Antigen retrieval : heat induced antigen retrieval was performed using 10mM sodium citrate (pH6.0) buffer, microwaved for 8-15 minutes

Dilution : 1:20



GTX15458 ICC/IF Image

ICC/IF analysis of MCF-7 cells using GTX15458 Presenilin 1 antibody [APS 18]. Cells were probed without (right) or with(left) an antibody.

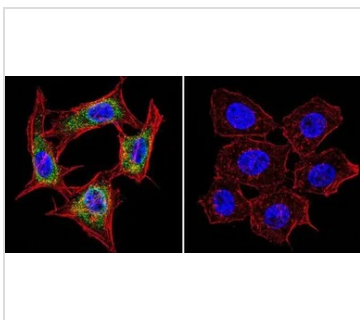
Green : Primary antibody

Blue : Nuclei

Red : Actin

Fixation : formaldehyde

Dilution : 1:100 overnight at 4 °C



GTX15458 ICC/IF Image

ICC/IF analysis of HeLa cells using GTX15458 Presenilin 1 antibody [APS 18]. Cells were probed without (right) or with(left) an antibody.

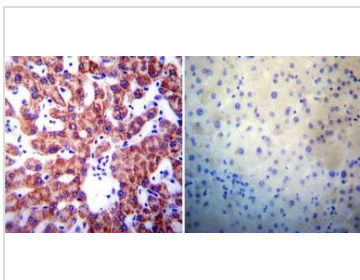
Green : Primary antibody

Blue : Nuclei

Red : Actin

Fixation : formaldehyde

Dilution : 1:100 overnight at 4 °C



GTX15458 IHC-P Image

IHC-P analysis of human liver tissue using GTX15458 Presenilin 1 antibody [APS 18].

Left : Primary antibody

Right : Negative control without primary antibody

Antigen retrieval : heat induced antigen retrieval was performed using 10mM sodium citrate (pH6.0) buffer, microwaved for 8-15 minutes

Dilution : 1:200



For full product information, images and publications, please visit our [website](#).