

NSE antibody (Ready-to-use)

Cat. No. GTX15488

Host	Rabbit
Clonality	Polyclonal
Isotype	IgG
Applications	IHC-P
Reactivity	Human

Package
7 ml

Applications

Application Note

IHC-P: Working dilution, ready-to-use for 10 minutes at RT. Staining of formalin-fixed tissues requires boiling tissue sections in 10mM Citrate buffer, pH 6.0 for 10 minutes, followed by cooling at RT for 20 minutes. Optimal dilutions/concentrations should be determined by the end user.

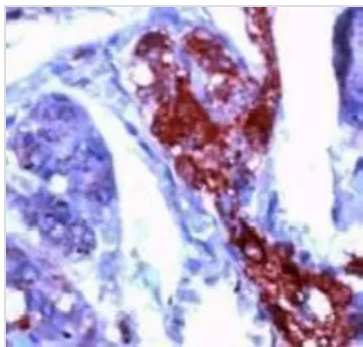
Properties

Form	Liquid
Buffer	PBS, 1% BSA
Preservative	0.1% Sodium azide
Storage	Store as concentrated solution. Centrifuge briefly prior to opening vial. Store at 4°C. DO NOT FREEZE.
Immunogen	Synthetic peptide (unfortunately, the amino acid sequence is considered to be commercially sensitive) (Human) (C terminal).
Purification	Unpurified
Conjugation	Unconjugated
Note	<p>For laboratory research use only. Not for any clinical, therapeutic, or diagnostic use in humans or animals. Not for animal or human consumption.</p> <p>Purchasers shall not, and agree not to enable third parties to, analyze, copy, reverse engineer or otherwise attempt to determine the structure or sequence of the product.</p>



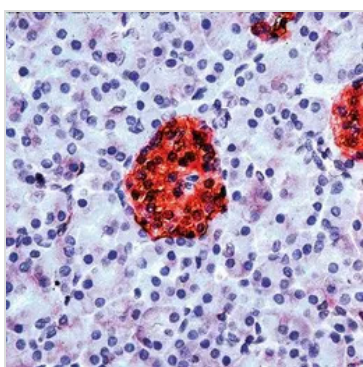
For full product information, images and publications, please visit our [website](#).

DATA IMAGES



GTX15488 IHC-P Image

GTX15488 staining NSE in human pancreas by Immunohistochemistry (FFPE-sections).



GTX15488 IHC-P Image

Human Pancreas stained with anti-Neuron Specific Enolase (NSE) antibody (GTX15486)



For full product information, images and publications, please visit our [website](#).