

# PMP22 antibody

**Cat. No. GTX15506**

<b>Host</b>	Rabbit
<b>Clonality</b>	Polyclonal
<b>Isotype</b>	IgG
<b>Applications</b>	IHC-P
<b>Reactivity</b>	Human

References ( 1 )

Package

500 µl

## Applications

### Application Note

IHC-P: Use at a dilution of 1/50 for 10 minutes at RT. Staining of formalin-fixed tissues requires boiling tissue sections in 10mM Citrate buffer, pH 6.0 for 10 minutes, followed by cooling at RT for 20 minutes. Optimal dilutions/concentrations should be determined by the end user.

## Properties

<b>Form</b>	Liquid
<b>Buffer</b>	PBS, 1% BSA
<b>Preservative</b>	0.09% Sodium azide
<b>Storage</b>	Store as concentrated solution. Centrifuge briefly prior to opening vial. Store at 4°C. DO NOT FREEZE.
<b>Concentration</b>	Batch dependent (Please refer to the vial label for the specific concentration.)
<b>Immunogen</b>	Synthetic peptide (unfortunately, the amino acid sequence is considered to be commercially sensitive) (Human) (C terminal).
<b>Purification</b>	Immunogen affinity purified
<b>Conjugation</b>	Unconjugated

### Note

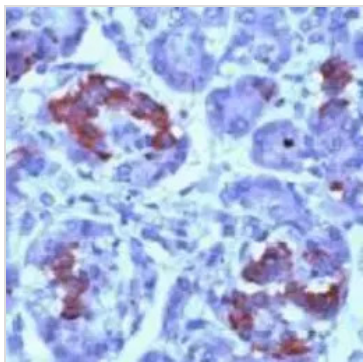
For laboratory research use only. Not for any clinical, therapeutic, or diagnostic use in humans or animals. Not for animal or human consumption.

Purchasers shall not, and agree not to enable third parties to, analyze, copy, reverse engineer or otherwise attempt to determine the structure or sequence of the product.



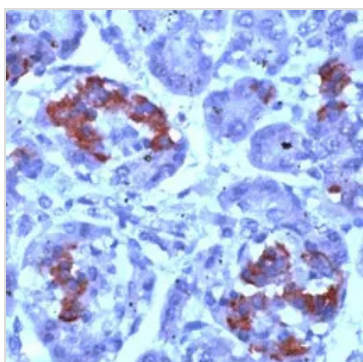
For full product information, images and publications, please visit our [website](#).

## DATA IMAGES



### GTX15506 IHC-P Image

GTX15506 staining PMP22 in human pancreas by Immunohistochemistry (FFPE-sections).



### GTX15506 IHC-P Image

Human Pancreas stained with anti-Peripheral Myelin Protein (PMP-22) antibody (GTX15506)



For full product information, images and publications, please visit our [website](#).