

# TGF alpha antibody

**Cat. No. GTX15541**

<b>Host</b>	Rabbit
<b>Clonality</b>	Polyclonal
<b>Isotype</b>	IgG
<b>Applications</b>	IHC-P, IHC
<b>Reactivity</b>	Human

**Package**  
500 µl

## Applications

### Application Note

IHC-P: Use at a dilution of 1/50 for 10 min at RT. Staining of formalin-fixed tissues requires boiling tissue sections in 10mM citrate buffer, pH 6.0 for 10 min followed by cooling at RT for 20 min. Optimal dilutions/concentrations should be determined by the end user.

## Properties

<b>Form</b>	Liquid
<b>Buffer</b>	PBS, 1% BSA
<b>Preservative</b>	0.09% Sodium azide
<b>Storage</b>	Store as concentrated solution. Centrifuge briefly prior to opening vial. Store at 4°C. DO NOT FREEZE.
<b>Concentration</b>	Batch dependent (Please refer to the vial label for the specific concentration.)
<b>Immunogen</b>	A synthetic peptide derived from near C-terminal of human TGF alpha.
<b>Purification</b>	Immunogen affinity purified
<b>Conjugation</b>	Unconjugated

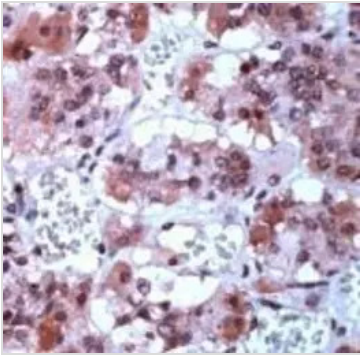
### Note

For laboratory research use only. Not for any clinical, therapeutic, or diagnostic use in humans or animals. Not for animal or human consumption.

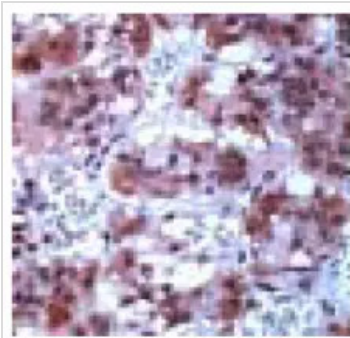
Purchasers shall not, and agree not to enable third parties to, analyze, copy, reverse engineer or otherwise attempt to determine the structure or sequence of the product.



For full product information, images and publications, please visit our [website](#).

**DATA IMAGES**

**GTX15541 IHC Image**

Human pituitary stained with GTX15541


**GTX15541 IHC Image**

Human pituitary stained with  
anti-TGF $\alpha$



For full product information, images and  
publications, please visit our [website](#).