

## Presenilin 2 antibody [APS 21]

**Cat. No. GTX15548**

<b>Host</b>	Mouse
<b>Clonality</b>	Monoclonal
<b>Isotype</b>	IgG1
<b>Applications</b>	WB, ICC/IF, IHC-P, ELISA, IHC
<b>Reactivity</b>	Human, Mouse, Rat, Primate

Package  
200 µg

## Applications

**Application Note**

\*Optimal dilutions/concentrations should be determined by the researcher.

Suggested dilution	Recommended dilution
WB	1:100-1:1000
ICC/IF	0.75 µg/ml
IHC-P	1:100
ELISA	4.5 µg/ml
IHC	Assay dependent

Not tested in other applications.

**Calculated MW** 50 kDa. ( [Note](#) )

**Product Note** No cross-reactivity is seen with presenilin 1. This antibody detects an ~28 kDa protein representing PS2 NT (N-terminus fragment) and the ~46 kDa full-length PS2 from transfected COS-7 cells.

## Properties

<b>Form</b>	Liquid
<b>Buffer</b>	PBS, 0.1% BSA
<b>Preservative</b>	0.05% Sodium azide
<b>Storage</b>	Store as concentrated solution. Centrifuge briefly prior to opening vial. For short-term storage (1-2 weeks), store at 4°C. For long-term storage, aliquot and store at -20°C or below. Avoid multiple freeze-thaw cycles.
<b>Concentration</b>	1 mg/ml (Please refer to the vial label for the specific concentration.)
<b>Immunogen</b>	Synthetic peptide corresponding to residues C(31) Q E G R Q G P E D G E N T A(45) of human PS2.
<b>Purification</b>	Protein G purified
<b>Conjugation</b>	Unconjugated



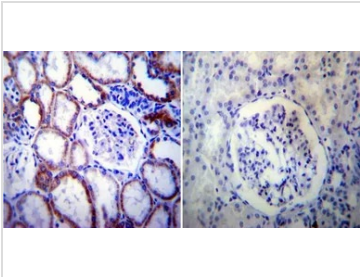
For full product information, images and publications, please visit our [website](#).

Date 2026 / 05 / 04 Page 1 of 2

For laboratory research use only. Not for any clinical, therapeutic, or diagnostic use in humans or animals. Not for animal or human consumption.

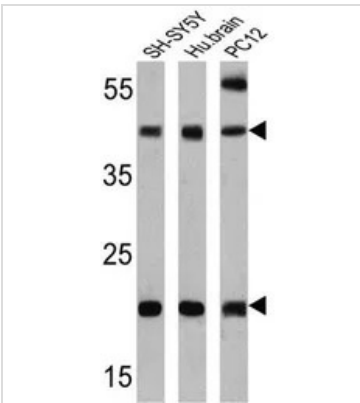
**Note**  
 Purchasers shall not, and agree not to enable third parties to, analyze, copy, reverse engineer or otherwise attempt to determine the structure or sequence of the product.

DATA IMAGES



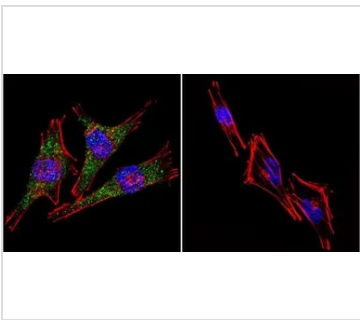
**GTX15548 IHC-P Image**

IHC-P analysis of human kidney tissue using GTX15548 Presenilin 2 antibody [APS 21].  
 Left : Primary antibody  
 Right : Negative control without primary antibody  
 Antigen retrieval : heat induced antigen retrieval was performed using 10mM sodium citrate (pH6.0) buffer, microwaved for 8-15 minutes  
 Dilution : 1:100



**GTX15548 WB Image**

WB analysis of 25 ug of SH-SY5Y (lane 1), human brain (lane 2) and PC12 (lane 3) using GTX15548 Presenilin 2 antibody [APS 21].  
 Dilution : 1:200



**GTX15548 ICC/IF Image**

ICC/IF analysis of A2058 Cells using GTX15548 Presenilin 2 antibody [APS 21]. Cells were probed without (right) or with(left) an antibody.  
 Green : Primary antibody  
 Blue : Nuclei  
 Red : Actin  
 Fixation : formaldehyde  
 Dilution : 1:100 overnight at 4 °C



For full product information, images and publications, please visit our [website](#).