

Presenilin 2 antibody [APS 26]

Cat. No. GTX15549

Host	Mouse
Clonality	Monoclonal
Isotype	IgG1
Applications	WB, ICC/IF, IHC-P, IP, ELISA, IHC
Reactivity	Human, Mouse, Rat, Primate

Package
200 µg

Applications

Application Note

*Optimal dilutions/concentrations should be determined by the researcher.

Suggested dilution	Recommended dilution
WB	1:100-1:1000
ICC/IF	0.75 µg/ml
IHC-P	1:20
IP	Assay dependent
ELISA	4.5 µg/ml
IHC	Assay dependent

Not tested in other applications.

Calculated MW 50 kDa. ([Note](#))

Product Note No cross-reactivity is seen with presenilin 1. This antibody detects an ~20 kDa protein representing PS2 CT (C-terminal fragment) and the ~45 kDa full-length PS2 from transfected COS-7 cells.

Properties

Form	Liquid
Buffer	PBS, 0.1% BSA
Preservative	0.05% Sodium azide
Storage	Store as concentrated solution. Centrifuge briefly prior to opening vial. For short-term storage (1-2 weeks), store at 4°C. For long-term storage, aliquot and store at -20°C or below. Avoid multiple freeze-thaw cycles.
Concentration	1 mg/ml (Please refer to the vial label for the specific concentration.)
Immunogen	Synthetic peptide corresponding to residues C L(317) P Y D P E M E E D S Y D S F G E P(334) of human PS2.
Purification	Protein G purified



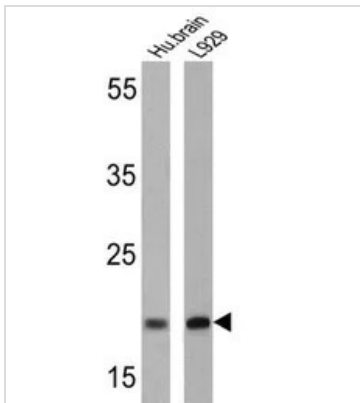
For full product information, images and publications, please visit our [website](#).

Conjugation Unconjugated

For laboratory research use only. Not for any clinical, therapeutic, or diagnostic use in humans or animals. Not for animal or human consumption.

Note Purchasers shall not, and agree not to enable third parties to, analyze, copy, reverse engineer or otherwise attempt to determine the structure or sequence of the product.

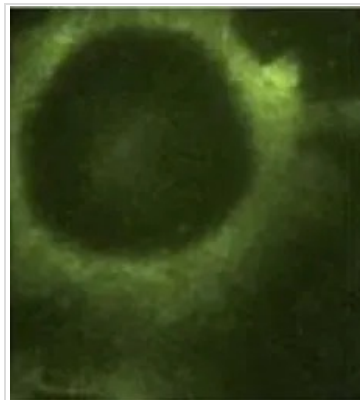
DATA IMAGES



GTX15549 WB Image

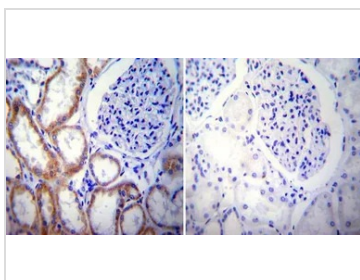
WB analysis of 25 ug of human brain (lane 1) and L929 (lane 2) using GTX15549 Presenilin 2 antibody [APS 26].

Dilution : 1:200



GTX15549 ICC/IF Image

ICC/IF analysis of mouse fibroblasts using GTX15549 Presenilin 2 antibody [APS 26].



GTX15549 IHC-P Image

IHC-P analysis of human kidney tissue using GTX15549 Presenilin 2 antibody [APS 26].

Left : Primary antibody

Right : Negative control without primary antibody

Antigen retrieval : heat induced antigen retrieval was performed using 10mM sodium citrate (pH6.0) buffer, microwaved for 8-15 minutes

Dilution : 1:20



For full product information, images and publications, please visit our [website](#).