

## beta Tubulin antibody

Cat. No. GTX15568

<b>Host</b>	Rabbit
<b>Clonality</b>	Polyclonal
<b>Isotype</b>	IgG
<b>Applications</b>	WB, IHC-P, IHC-Fr, IP
<b>Reactivity</b>	Human, Mouse, Rat, Zebrafish, Bovine, Guinea pig, Pig, Fungi, Gerbil, Sea Urchin

References ( 4 )

Package

500 µl

## Applications

## Application Note

IHC-P: Use at a dilution of 1/200 for 10 minutes at RT. IP: Use at an assay dependent dilution. WB: Use at an assay dependent dilution. Predicted molecular weight: 55 kDa. Optimal dilutions/concentrations should be determined by the end user.

## Properties

<b>Form</b>	Liquid
<b>Buffer</b>	PBS, 1% BSA
<b>Preservative</b>	0.09% Sodium azide
<b>Storage</b>	Store as concentrated solution. Centrifuge briefly prior to opening vial. Store at 4°C. DO NOT FREEZE.
<b>Concentration</b>	0.2 mg/ml (Please refer to the vial label for the specific concentration.)
<b>Immunogen</b>	Synthetic peptide: NDLVSEYQQYQDATA, corresponding to amino acids 416-430 of Human beta Tubulin.
<b>Purification</b>	Immunogen affinity purified From polyclonal serum.
<b>Conjugation</b>	Unconjugated

## Note

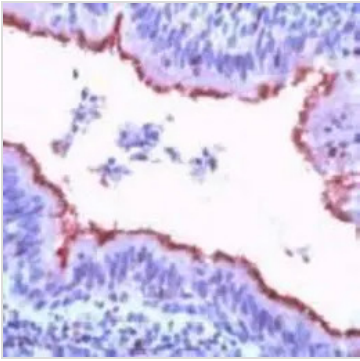
For laboratory research use only. Not for any clinical, therapeutic, or diagnostic use in humans or animals. Not for animal or human consumption.

Purchasers shall not, and agree not to enable third parties to, analyze, copy, reverse engineer or otherwise attempt to determine the structure or sequence of the product.



For full product information, images and publications, please visit our [website](#).

## DATA IMAGES

**GTX15568 IHC-P Image**

GTX15568 staining beta Tubulin in human lung by Immunohistochemistry (FFPE-sections).



For full product information, images and publications, please visit our [website](#).