

PRX I antibody

Cat. No. GTX15571

Host	Rabbit
Clonality	Polyclonal
Isotype	IgG
Application	WB, ICC/IF, IHC
Reactivity	Human, Mouse, Rat, Monkey

Reference (1)

Package

100 µl

APPLICATION

Application Note

*Optimal dilutions/concentrations should be determined by the researcher.

Suggested dilution	Recommended dilution
WB	1:1,000 - 1:5,000
ICC/IF	1:250
IHC	Assay dependent

Not tested in other applications.

Calculated MW 22 kDa. ([Note](#))

Product Note This antibody is specific for Prx 1 and shows no cross-reactivity with other Prx isoforms.

PROPERTIES

Form	Liquid
Buffer	Serum
Preservative	0.05% Sodium azide
Storage	Store as concentrated solution. Centrifuge briefly prior to opening vial. For short-term storage (1-2 weeks), store at 4°C. For long-term storage, aliquot and store at -20°C or below. Avoid multiple freeze-thaw cycles.
Immunogen	Synthetic peptide corresponding to residues L(103) V S D P K R T I A Q D(114) of human Peroxiredoxin 1.
Purification	Unpurified
Conjugation	Unconjugated

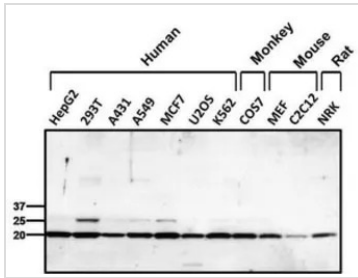
Note

For laboratory research use only. Not for any clinical, therapeutic, or diagnostic use in humans or animals. Not for animal or human consumption.

Purchasers shall not, and agree not to enable third parties to, analyze, copy, reverse engineer or otherwise attempt to determine the structure or sequence of the product.

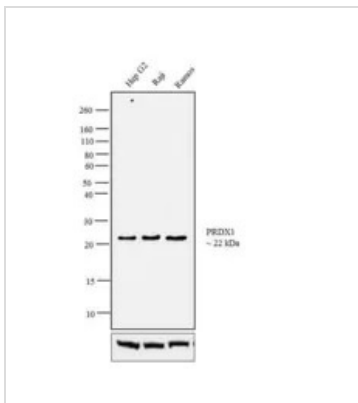


For full product information, images and publications, please visit our [website](#).

DATA IMAGES

GTX15571 WB Image

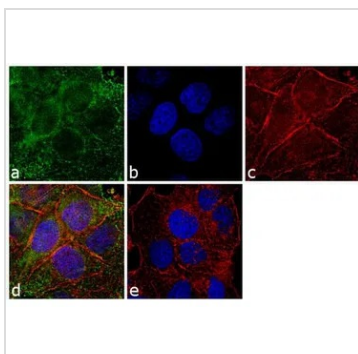
WB analysis of 25 ug of various whole cell lysates using GTX15571 PRX I antibody.

Dilution : 1:1000


GTX15571 WB Image

WB analysis of whole cell extracts (30 µg lysate) of Hep G2 (Lane 1), Raji (Lane 2) and Ramos (Lane 3) using GTX15571 PRX I antibody.

Dilution : 0.5 µg/ml


GTX15571 ICC/IF Image

ICC/IF analysis of T-47D cells using GTX15571 PRX I antibody. Panel e shows the no primary antibody control.

Green : Primary antibody

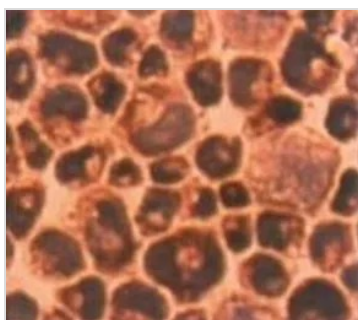
Blue : Nuclei

Red : Actin

Fixation : 4% paraformaldehyde

Permeabilization : 0.1% Triton X-100 for 10 minutes

Dilution : 1:250 dilution in 0.1% BSA and incubated for 3 hours at room temperature


GTX15571 ICC/IF Image

ICC/IF analysis of TSU-Pr1 cells using GTX15571 PRX I antibody.



For full product information, images and publications, please visit our [website](https://www.genetex.com).